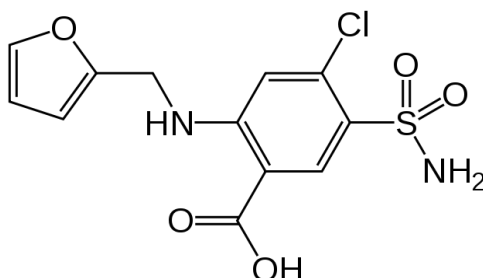


TERRY WHITE CHEMISTS FRUSEMIDE TABLETS**NAME OF THE MEDICINE**

Frusemide.

Chemical Name: 4-chloro-2-(furan-2-ylmethylamino)-5-sulfamoylbenzoic acid

Structural Formula:

Molecular Formula: C₁₂H₁₁ClN₂O₅S

Molecular Weight: 330.744

CAS Registry Number: 54-31-9

DESCRIPTION

Frusemide is an anthranilic acid derivative. It is a white to off-white odourless crystalline powder. It is practically insoluble in water, sparingly soluble in alcohol, freely soluble in dilute alkali solutions and insoluble in dilute acids.

Frusemide tablets are intended for oral administration. Each tablet contains 20 mg or 40 mg frusemide. In addition, each tablet contains the following inactive ingredients: lactose, maize starch, pregelatinised maize starch, sodium starch glycolate (type A) and magnesium stearate.

PHARMACOLOGY**Pharmacological Actions**

Frusemide is a potent diuretic. It inhibits sodium and chloride absorption in the ascending limb of Henle's loop and in both the proximal and distal tubules. The high degree of efficacy is due to this unique site of action. The action on the distal tubule is independent of any inhibitory effect on carbonic anhydrase or aldosterone.

Frusemide may promote diuresis in cases which have previously proved resistant to other diuretics.

Frusemide has no significant pharmacological effects other than on renal function.

PharmacokineticsAbsorption

Frusemide is rapidly absorbed from the gastrointestinal tract. Absorption rates in healthy subjects have been reported from 60–69% and from 43–46% in patients with end stage renal failure.

The onset of diuresis following oral administration is within 1 hour. The peak effect occurs within the first or second hour. The duration of diuretic effect is 6 to 8 hours.

The onset of diuresis following intravenous administration is within 5 minutes and somewhat later after intramuscular administration. The peak effect occurs within the first half hour. The duration of diuretic effect is approximately 2 hours.

In fasted normal men, the mean bioavailability of frusemide from tablets is 64% of that from an intravenous injection of the drug. Peak plasma concentrations increase with increasing dose but times-to-peak do not differ among doses.

Distribution

Frusemide is extensively bound to plasma proteins, mainly albumin. Plasma concentrations of 1–400 µg/mL are 91 to 99% bound in healthy individuals. The unbound fraction averages 2.3 to 4.1% at therapeutic concentrations.

Metabolism

Recent evidence suggests that frusemide glucuronide is the only, or at least the major, biotransformation product of frusemide in humans.

Excretion

In patients with normal renal function, approximately 80% of an intravenous or intramuscular dose is excreted in the urine within 24 hours. Urinary excretion is accomplished both by glomerular filtration and proximal tubular secretion, which accounts for roughly 66% of the ingested dose, the remainder being excreted in the faeces. A small fraction is metabolised by cleavage of the side chain.

Significantly more frusemide is excreted in urine following an intravenous injection than after tablet administration.

Frusemide has a bi-phasic half-life in the plasma with $t_{1/2}$ ranging up to 100 minutes; $t_{1/2}$ is prolonged by renal and hepatic insufficiency, and in newborn infants.

INDICATIONS

Oedema

Frusemide is indicated in adults, infants and children for the treatment of oedema associated with congestive heart failure, cirrhosis of the liver and renal disease including the nephrotic syndrome. Frusemide is particularly useful when an agent with greater diuretic potential than that of those commonly employed is desired.

Parenteral therapy with frusemide should be reserved for patients unable to take oral medication or for patients in emergency clinical situations. If gastrointestinal absorption is impaired or oral medication is not practical for any reason, frusemide is indicated by the intravenous or intramuscular route. Parenteral use should be replaced with oral frusemide as soon as practical.

Hypertension

Oral frusemide may be used in adults for the treatment of hypertension alone or in combination with other antihypertensive agents. Hypertensive patients who cannot be adequately controlled with thiazides will probably also not be adequately controlled with frusemide alone.

CONTRAINDICATIONS

Known hypersensitivity to frusemide, sulfonamides or any of the inactive ingredients (see **DESCRIPTION**). Patients allergic to sulfonamides (e.g. sulfonamide antibiotics or sulfonylureas) may show cross-sensitivity to frusemide.

Complete renal shutdown; impaired renal function or anuria. If increasing azotaemia and oliguria occur during treatment of severe progressive renal disease, discontinue frusemide. Severe hypokalaemia, hyponatraemia, hypovolaemia, dehydration or hypotension must be regarded as contraindications until serum electrolytes, fluid balance and blood pressure have been restored to normal levels.

In hepatic coma or pre-coma and conditions producing electrolyte depletion, frusemide therapy should not be instituted until the underlying conditions have been corrected or ameliorated.

In breast-feeding or pregnant women.

Do not administer frusemide to newborns presenting jaundice or to infants with conditions which might induce hyperbilirubinaemia or kernicterus (e.g. Rhesus incompatibility, familial non-haemolytic jaundice etc.) because of frusemide's *in vitro* potential to displace bilirubin from albumin.

PRECAUTIONS

This medicine contains lactose. Patients with rare hereditary problems of galactose intolerance, the Lapp lactase deficiency or glucose-galactose malabsorption should not take this medicine.

Excessive diuresis may result in dehydration and reduction in blood volume with circulatory collapse and with the possibility of vascular thrombosis and embolism, particularly in elderly patients.

Excessive loss of potassium in patients receiving cardiac glycosides may precipitate digitalis toxicity.

In patients with hepatic cirrhosis and ascites, initiation of therapy with frusemide is best carried out in hospital. Sudden alterations of fluid and electrolyte balance in patients with cirrhosis may precipitate hepatic coma, therefore, strict observation is necessary during the period of diuresis.

Cases of reversible or irreversible tinnitus or hearing impairment have been reported. Usually, reports indicate that frusemide ototoxicity is associated with rapid injection or infusion, severe renal impairment, hypoproteinaemia, doses exceeding several times the usual recommended dose or concomitant therapy with aminoglycoside antibiotics, ethacrynic acid or other ototoxic drugs. In patients with hypoproteinaemia, e.g. associated with nephrotic syndrome, the effect of frusemide may be weakened and its ototoxicity potentiated. Cautious dose titration is required.

Caution should be exercised when administering curare or its derivatives to patients undergoing frusemide therapy. It is also advisable to discontinue frusemide for one week prior to any elective surgery.

Caution should be exercised and the risks and benefits of combining risperidone with frusemide or other potent diuretics should be considered prior to the decision to treat. In risperidone placebo-controlled trials in elderly patients with dementia, a higher incidence of mortality was observed in patients treated with frusemide plus risperidone (7.3%; mean age 89 years, range 75–97) compared to treatment with risperidone alone (3.1%; mean age 84 years, range 70–96) or frusemide alone (4.1%; mean age 80 years, range 67–90). Concomitant use of risperidone with other diuretics (mainly thiazide diuretics used in low doses) was not associated with similar mortality findings. No pathophysiological mechanism has been identified to explain this finding and no consistent pattern for cause of death was observed. Nevertheless, caution is advised. Irrespective of treatment, dehydration was an overall risk factor for mortality and should, therefore, be carefully avoided in elderly patients with dementia.

Rigid sodium restriction is conducive to both hyponatraemia and hypokalaemia; thus, strict restriction of sodium intake is not advisable in patients receiving frusemide.

Frusemide should be used with care, especially in the initial stages, in patients with impairment of micturition (e.g. prostatic hypertrophy). Urinary outflow must be secured. In patients with a partial obstruction of urinary outflow (e.g. in patients with bladder-emptying disorders, prostatic hyperplasia or narrowing of the urethra), increased production of urine may provoke or aggravate complaints. Thus, these patients require careful monitoring.

Particularly careful monitoring is required in patients with gout, patients with partial obstruction of urinary outflow, in patients with hypotension or who are at particular risk from a pronounced fall in blood pressure (e.g. patients with significant stenoses of the coronary arteries or of the blood vessels supplying the brain), in patients with latent or manifest diabetes mellitus, in patients with hepatorenal syndrome or in patients with hypoproteinaemia (e.g. associated with nephrotic syndrome). Dose titration, especially in this latter case, is required. In premature infants, there is the possible development of nephrocalcinosis/nephrolithiasis and therefore renal function must be monitored and renal ultrasonography performed. In premature infants frusemide administered during the first weeks of life may increase the risk of persistence of Botallo's duct.

As with any effective diuretic, electrolyte depletion may occur during therapy, especially in patients receiving higher doses and a restricted salt intake. All patients receiving frusemide therapy should be observed for signs of fluid or electrolyte imbalance namely hyponatraemia, hypochloaemic alkalosis and hypokalaemia. Periodic determinations of serum electrolytes to detect a possible imbalance should be performed at appropriate intervals, as well as creatinine, blood urea and CO₂ content determinations. This is particularly important when the patient is at high risk of developing electrolyte imbalances (e.g. receiving parenteral fluids) or in case of significant additional fluid loss, such as vomiting, diarrhoea and intense sweating. Warning signs of an imbalance, irrespective of cause include dryness of mouth, thirst, weakness, lethargy, drowsiness, restlessness, muscle pains or cramps, muscular fatigue, hypotension, oliguria, tachycardia, arrhythmia and gastrointestinal disturbances, such as nausea and vomiting. Hypovolaemia or dehydration as well as any significant

electrolyte and acid-base disturbances must be corrected. This may require temporary discontinuation of frusemide.

During long-term therapy, a high potassium diet is recommended. Potassium supplements may be required, especially when high doses are used for prolonged periods. Particular caution with potassium is necessary when the patient is on digitalis glycosides, potassium depleting steroids or in the case of infants and children. Potassium supplementation, diminution in dose or discontinuation of frusemide therapy may be required.

Periodic checks on urine and blood glucose should be made in diabetics and even those suspected of latent diabetes when receiving frusemide. Increases in blood glucose and alterations in glucose tolerance tests with abnormalities of the fasting and 2-hour post prandial sugar have been observed and rare cases of precipitation of diabetes mellitus have been reported.

Frusemide may lower calcium levels and rare cases of tetany have been reported. Accordingly, periodic serum calcium levels should be obtained.

In children, the urge to defecate, complaints of abdominal pain and cramping have been reported after IV frusemide. An association of these symptoms with a low serum calcium and/or a low calcium/protein ratio is possible.

Reversible elevations of blood urea may be seen. These have been observed in association with dehydration, which should be avoided, particularly in patients with renal insufficiency.

Frusemide increases cholesterol and triglycerides short-term. It is not clear whether this effect persists long-term; however, the current evidence does not indicate this.

As with many other drugs, patients should be observed regularly for the possible occurrence of blood dyscrasias, liver damage or other idiosyncratic reactions.

Renal calcifications (from barely visible on X-ray to staghorn) have occurred in some severely premature infants treated with intravenous frusemide for oedema due to patent ductus arteriosus and hyaline membrane disease. The concurrent use of chlorothiazides has been reported to decrease hypercalciuria and to dissolve some calculi.

The possibility exists of exacerbation or activation of systemic lupus erythematosus.

Asymptomatic hyperuricaemia can occur and rarely, gout may be precipitated.

Driving a Vehicle or Performing other Potentially Hazardous Tasks

Some adverse effects (e.g. an undesirable pronounced fall in blood pressure) may impair the patient's ability to concentrate and react and therefore constitute a risk in situations where these abilities are of special importance (e.g. operating a vehicle or machinery).

Use in Pregnancy (Category C)

Frusemide must not be given during pregnancy unless there are compelling medical reasons. Treatment during pregnancy requires monitoring of foetal growth.

Thiazides, related diuretics and loop diuretics enter the foetal circulation and may cause electrolyte disturbances. Neonatal thrombocytopaenia has been reported with thiazides and related diuretics. Loop diuretics, like frusemide and bumetanide, are probably also associated with this risk. During the latter part of pregnancy, products of this type should only be given on sound indications and then in the lowest effective dose. In pregnancy, frusemide must only be used in patients with a marked reduction in glomerular filtration.

Use in Lactation

Frusemide passes into the breast milk and inhibits lactation. Women must not breast feed if being treated with frusemide.

Interactions with Food

IT IS RECOMMENDED THAT ORAL FORMULATIONS OF FRUSEMIDE BE TAKEN ON AN EMPTY STOMACH.INTERACTIONS WITH OTHER MEDICINES

Combinations that are Not Recommended

Frusemide may increase the ototoxic and nephrotoxic potential of certain antibiotics (e.g. aminoglycosides) and certain cephalosporins (e.g. cephaloridine) and other ototoxic drugs, especially

in the presence of impaired renal function; therefore, the simultaneous administration of these drugs is not advisable.

Anticonvulsants may decrease the response to frusemide. In isolated cases intravenous administration of frusemide within 24 hours of taking chloral hydrate may lead to flushing, sweating attacks, restlessness, nausea, increase in blood pressure and tachycardia. Use of frusemide concomitantly with chloral hydrate is, therefore, not recommended.

Precautions for Use

Frusemide should not be used concomitantly with ethacrynic acid or cisplatin because of the possibility of ototoxicity. In addition, nephrotoxicity of cisplatin may be enhanced if frusemide is not given in low doses (e.g. 40 mg in patients with normal renal function) and with positive fluid balance when used to achieve forced diuresis during cisplatin treatment.

Frusemide decreases the excretion of lithium salts and may cause increased serum lithium levels, resulting in increased risk of lithium toxicity, including increased risk of cardiotoxic and neurotoxic effects of lithium. Therefore, it is recommended that lithium levels are carefully monitored in patients receiving this combination.

Oral frusemide and sucralfate must not be taken within two hours of each other because sucralfate decreases the absorption of frusemide from the intestine and hence, reduces its effect.

The action of other antihypertensive drugs may be potentiated by frusemide, especially in combination with angiotensin converting enzyme (ACE) inhibitors. The administration of ACE inhibitors to patients pre-treated with frusemide may lead to a deterioration in renal function including renal failure, or may result in severe hypotension especially when an ACE inhibitor or angiotensin II receptor antagonist is given for the first time or for the first time in an increased dose. Consideration must be given to interrupting the administration of frusemide temporarily or at least reducing the dose of frusemide for 3 days before starting treatment with or increasing the dose of an ACE inhibitor or angiotensin II receptor antagonist.

Caution should be exercised and the risks and benefits of treating a patient on risperidone with frusemide or other potent diuretics should be considered prior to the decision to use (see PRECAUTIONS regarding increased mortality in elderly patients with dementia concomitantly receiving risperidone).

High doses of frusemide may inhibit binding of thyroid hormones to carrier proteins when administered with levothyroxine, and thereby lead to an initial transient increase in free thyroid hormones, followed by an overall decrease in total thyroid hormone levels. It is recommended that thyroid hormones be monitored.

Take into Account

The effects of digitalis preparations and drugs inducing QT interval prolongation syndrome may be potentiated by changes in electrolyte concentrations (e.g. hypokalaemia, hypomagnesaemia) due to frusemide. When a cardiac glycoside is administered concurrently, it should be remembered that potassium or magnesium deficiency increases the sensitivity of the myocardium to digitalis and may increase the toxicity of drugs which induce QT interval prolongation syndrome. When a glucocorticoid is administered during diuretic treatment, the potassium-lowering effect of the steroid should be borne in mind (see above). Carbenoxolone, corticosteroids, prolonged use of laxatives or ingestion of liquorice in large amounts may also predispose a patient to hypokalaemia.

Patients receiving high doses of salicylates, as in rheumatic disease, in conjunction with frusemide may experience salicylate toxicity at lower doses because of competitive renal excretory sites.

Interactions between frusemide and neuromuscular blocking agents have been reported. These appear to be dependent on the dose of frusemide and the neuromuscular blocking agent involved. Low doses of frusemide (0.1–10 µg/kg) enhance the neuromuscular blockade of tubocurarine and succinylcholine. High doses (1–5 mg/kg) of frusemide have a tendency to antagonize the skeletal muscle relaxing effect of tubocurarine but may potentiate the action of succinylcholine. The clinical relevance of these findings is uncertain.

The combination of frusemide and amphotericin may result in an excessive loss of potassium.

Frusemide may decrease arterial responsiveness to noradrenaline. This diminution is not sufficient to preclude effectiveness of the pressor agent for therapeutic use.

If antihypertensive agents, diuretics or other drugs with blood-pressure lowering potential are given concomitantly with frusemide, a more pronounced fall in blood pressure must be anticipated.

Non-steroidal anti-inflammatory drugs including acetylsalicylic acid may reduce the natriuretic and antihypertensive effects of frusemide in some patients by inhibiting prostaglandin synthesis. In patients with dehydration or pre-existing hypovolaemia, non-steroidal anti-inflammatory drugs may cause acute renal failure. Salicylate toxicity may be increased by frusemide.

Phenytoin, methotrexate, probenecid and other drugs which, like frusemide, undergo significant renal tubular secretion may reduce the effect of frusemide. Conversely, frusemide may decrease renal elimination of these drugs. In the case of high dose treatment (in particular of both frusemide and the other drugs), this may lead to an increased risk of adverse effects due to frusemide or the concomitant medication.

IV frusemide was shown to increase the steady state concentration of theophylline by 20% in a small number of asthmatic patients; hence it is appropriate to measure serum theophylline levels when both drugs are given together.

The effects of curare-type muscle relaxants or of theophylline may be increased.

It should be borne in mind that the effect of antidiabetics or of pressor amines (e.g. adrenaline, noradrenaline) may be attenuated by frusemide (see **PRECAUTIONS**).

Impairment of renal function may develop in patients receiving concurrent treatment with frusemide and high doses of certain cephalosporins. The harmful effects of nephrotoxic drugs on the kidney may be increased.

Concomitant use of cyclosporin A and frusemide is associated with increased risk of gouty arthritis secondary to frusemide-induced hyperuricemia and cyclosporine impairment of renal urate excretion.

Patients who were at high risk for radiocontrast nephropathy treated with frusemide experienced a higher incidence of deterioration in renal function after receiving radiocontrast compared to high-risk patients who received only intravenous hydration prior to receiving radiocontrast.

ADVERSE EFFECTS

Whenever adverse reactions are moderate or severe, frusemide dose should be reduced or therapy withdrawn.

Metabolism and Nutritional Disorders

As with other diuretics, electrolytes and water balance may be disturbed during therapy with frusemide, especially in patients receiving high doses for a prolonged period. The serum potassium concentration may decrease, especially at the commencement of treatment (owing to the earlier onset of action of frusemide).

Excessive diuresis may give rise, especially in elderly patients and children, to circulatory disturbances such as headache, dizziness, dry mouth or visual impairment, as symptoms of hypovolaemia. In extreme cases, hypovolaemia and dehydration may lead to hypotension, circulatory collapse and, in elderly patients in particular, thrombophilia. However, with individualised dosage, acute haemodynamic reactions are generally not to be expected, although diuresis sets in rapidly.

All saluretics may cause hypokalaemia, mainly in cases of low potassium diet, vomiting or chronic diarrhoea.

Factors such as underlying diseases (liver cirrhosis, cardiac failure), concomitant medication (see **INTERACTIONS WITH OTHER MEDICINES**) or nutritional inadequacies (excessive restriction of salt intake), may lead to sodium (hyponatremia), chloride (hypochloremia), or other electrolyte or fluid deficiencies which may produce a fall in orthostatic blood pressure, calf muscle spasms, anorexia, weakness, dizziness, drowsiness, apathy, vomiting and confusion.

Frusemide may lower the serum calcium level (hypocalcaemia) which may trigger a state of increased neuromuscular irritability.

Frusemide may cause a rise in serum cholesterol and triglyceride.

Hypomagnesaemia and, in rare cases, tetany or cardiac arrhythmias have been observed as a consequence of increased renal magnesium loss.

Treatment with frusemide may lead to transitory increases in urine volume, blood creatinine and urea levels. Serum levels of uric acid (hyperuricaemia) may increase and attacks of gout may occur.

Pre-existing metabolic alkalosis (e.g. due to decompensated liver cirrhosis) may be aggravated during frusemide treatment. Metabolic alkalosis has been reported with frusemide use.

Treatment with frusemide has occasionally caused reduced glucose tolerance and deterioration in cases of manifest diabetes, or made latent diabetes manifest.

Pseudo-Bartter syndrome in the context of misuse and/or long-term use of frusemide has been reported.

Very common: electrolyte disturbances (including symptomatic), dehydration and hypovolaemia especially in elderly patients, increased blood creatinine, increased blood triglycerides.

Common: hyponatremia, hypochloremia, hypokalaemia, blood cholesterol increased blood uric acid increased and attacks of gout, urine volume increased.

Uncommon: impaired glucose tolerance. Latent diabetes mellitus may manifest.

Gastrointestinal Disorders and Hepato-biliary Disorders

Reactions with normal doses are uncommon with frusemide. They include anorexia, oral and gastric irritation, nausea, vomiting, cramping, diarrhoea and constipation.

In isolated cases, acute pancreatitis and increases in transaminases have been observed. Additionally, cholestasis and jaundice have been reported. Frusemide may increase the bile flow and distend the biliary tree which is already obstructed.

Central Nervous System Disorders

Reactions such as dizziness, vertigo, paraesthesia, headache and blurred vision occasionally accompany frusemide-induced diuresis.

Ear and Labyrinth Disorders

Reversible hearing impairment and tinnitus and rarely, permanent tinnitus and impairment of hearing, have been observed, especially in patients with markedly reduced renal function or hypoproteinaemia (e.g. in nephrotic syndrome). This occurs particularly when the injectable form of frusemide is used at a recommended rate of injection or infusion of 4 mg per minute (normal renal function) or 2.5 mg per minute (impaired renal function) is exceeded, or in patients who are also receiving drugs known to be ototoxic.

Cases of deafness, sometimes irreversible have been reported after oral administration of frusemide.

Skin and Subcutaneous Tissue Disorders

Allergic reactions may occur in the form of dermatitis, including rash, itching, urticaria, pruritis and rare cases of exfoliative dermatitis, necrotising angitis, bullous lesions or eruptions, pemphigoid, Steven-Johnson syndrome, toxic epidermal necrolysis, erythema multiforme and purpura. Photosensitivity reactions have been reported. Acute Generalized Exanthematous Pustulosis (AGEP) and Drug Rash with Eosinophilia and Systemic Symptoms (DRESS) have been reported with frusemide use.

Blood and the Lymphatic System Disorders

Common: haemoconcentration.

Uncommon: thrombocytopaenia.

Rare: eosinophilia, thrombophlebitis, haemolytic or aplastic anaemia, leukopaenia and agranulocytosis.

Congenital and Familial/Genetic Disorders

The persistence of patent ductus arteriosus when frusemide has been administered to a premature infant during the first weeks of life has been reported.

Renal and Urinary Disorders

Excessive diuresis and dehydration could cause transient elevation of creatinine and BUN and reduction of GFR. Rare cases of tubulointerstitial nephritis have been reported. In elderly men with prostatic hypertrophy, acute urinary retention with overflow incontinence may occur. Symptoms of existing conditions of obstructed micturition, such as uretostenosis or hydronephrosis, may be triggered or aggravated by pronounced diuresis. Interstitial nephritis has also been reported with frusemide use. In premature infants, calcium salts may be deposited in the renal tissue (nephrocalcinosis/ nephrolithiasis). In patients with a partial obstruction of urinary outflow, acute

retention of urine may occur. Increase in sodium and/or chloride urine levels and renal failure has been reported with frusemide use.

Vascular Disorders

Very common: (especially for intravenous infusion) orthostatic hypotension may occur and may be aggravated by alcohol, narcotics and barbiturates. Due to the possibility of side effects such as hypotension, a patient's ability to drive or operate machinery may be impaired, especially at the commencement of therapy. Ischaemic complications have also been reported in elderly patients. A tendency for thromboses has been reported. If frusemide is administered to premature infants during the first weeks of life, it may increase the risk of persistence of patent ductus arteriosus.

Rare: vasculitis.

Cases of thrombosis have been reported.

Immune System Disorders

Severe anaphylactic or anaphylactoid reactions (e.g. with shock) is rare, but is acutely life-threatening if it does occur.

Cases of exacerbation or activation of systemic lupus erythematosus have been reported.

Nervous System Disorders

Common: hepatic encephalopathy in patients with hepatocellular insufficiency.

Rare: paraesthesia.

General Disorders and Administration Site Conditions

Rarely, fever may occur. Following intramuscular injection, local reactions such as pain may occur. Restlessness has also been reported.

DOSAGE AND ADMINISTRATION

Oedema

Therapy should be individualised according to the patient's response. This therapy should be titrated to gain maximal therapeutic response with the minimum dose possible to maintain that diuretic response.

Adults: The usual initial daily dose of frusemide for oedema is 20 to 80 mg given as a single dose. If the diuretic response to a single dose of 20 to 80 mg is not satisfactory, increase this dose by increments of 20 to 40 mg, not sooner than 6 to 8 hours after the previous dose, until the desired diuretic effect is obtained. This individually determined dose should be given once or twice (e.g. at 8 am and 2 pm) daily. The dose of frusemide may be carefully titrated up to 400 mg/day (except in advanced renal failure) in those patients with severe clinical oedematous states. The mobilisation of oedema may be most efficiently and safely accomplished by giving frusemide on 2 to 4 consecutive days each week.

When doses exceeding 80 mg/day are given for prolonged periods, careful clinical laboratory observations are particularly advisable.

Infants and Children: The usual initial dose is 2mg/kg body weight given as a single dose. If the diuretic response is not satisfactory, the dose may be increased by 1 to 2 mg/kg no sooner than 6 to 8 hours after the previous dose. Doses of greater than 6 mg/kg body weight are not recommended.

For maintenance therapy in infants and children, the dose should be adjusted to the minimum effective level.

Hypertension

Therapy should be individualized according to the patient's response. This therapy should be titrated to gain maximal therapeutic response with the minimum dose possible to maintain that therapeutic response.

Adults: The usual initial daily dose of frusemide for hypertension is 80 mg, usually divided into 40 mg twice a day. Dosage should then be adjusted according to response. If response is not satisfactory, add other antihypertensive agents.

Changes in blood pressure must be carefully monitored when frusemide is used with other antihypertensive drugs, especially during initial therapy.

To prevent an excessive drop in blood pressure, the dosage of other agents should be reduced by at least 50% when frusemide is added to the regimen. As the blood pressure falls under the potentiating effect of frusemide, a further reduction in dosage or even discontinuation of other antihypertensive drugs may be necessary.

OVERDOSAGE

Symptoms

The clinical picture in acute or chronic overdose depends primarily on the extent and consequences of electrolyte and fluid loss e.g. dehydration, blood volume reduction, hypotension, electrolyte imbalance, cardiac arrhythmias (including A-V block and ventricular fibrillation), hypokalaemia and hypochloreaemic alkalosis, and extensions of its diuretic action. Symptoms of these disturbances include severe hypotension (progressing to shock), acute renal failure, thrombosis, delirious states, flaccid paralysis, apathy and confusion.

The acute toxicity of frusemide has been determined in mice, rats and dogs. In all three, the oral LD₅₀ exceeded 1,000 mg/kg body weight, while the intravenous LD₅₀ ranged from 300–680 mg/kg. The acute intragastric toxicity in neonatal rats is 7–10x that of adult rats. The concentration of frusemide in biological fluids associated with toxicity or death is not known.

Treatment

No specific antidote to frusemide is known. If ingestion has only just taken place, attempts may be made to limit further systemic absorption of the active ingredient by measures such as activated charcoal.

Treatment of overdose is supportive and consists of replacement of excessive fluid and electrolyte losses. Serum electrolytes, carbon dioxide level and blood pressure should be determined frequently. Adequate drainage must be assured in patients with urinary bladder outlet obstruction (such as prostatic hypertrophy). Haemodialysis does not accelerate frusemide elimination.

Contact the Poison Information Centre on 13 11 26 (Australia) for advice on the management of overdose.

PRESENTATION AND STORAGE CONDITIONS

Terry White Chemists Frusemide tablets are intended for oral administration.

Each tablet contains 20 mg or 40 mg frusemide, as the active ingredient.

20 mg tablets

White to off-white round tablets, debossed with 'F2' on one side and plain on the other side.

Packaged in bottles of 50, 100 and 1000 tablets (AUST R 186513).

40 mg tablets

White to off-white round tablets, debossed with 'F4' on one side and breakline on the other side.

Packaged in bottles of 30, 50, 60, 100, 250 and 1000 tablets (AUST R 186530).

* Not all strengths and/or pack sizes may be available,

Store below 25°C. Protect from light.

POISON SCHEDULE OF THE MEDICINE

S4: Prescription Only Medicine.

NAME AND ADDRESS OF THE SPONSOR

Apotex Pty Ltd
16 Giffnock Avenue

Macquarie Park NSW 2113

Date of first inclusion in the ARTG: 25 June 2012

Date of most recent amendment: 2 May 2016