

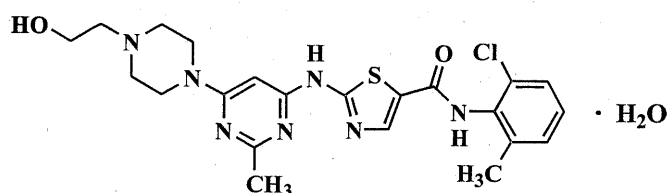
PRODUCT INFORMATION

SPRYCEL[®]

NAME OF THE MEDICINE

SPRYCEL[®] (Dasatinib)

SPRYCEL[®] (Dasatinib) is a potent inhibitor of multiple oncogenic kinases, cellular enzymes involved in the transmission of growth signals from the cell membrane to the nucleus. The chemical name for dasatinib is *N*-(2-chloro-6-methylphenyl)-2-[[6-[4-(2-hydroxyethyl)-1-piperazinyl]-2-methyl-4-pyrimidinyl]amino]-5-thiazolecarboxamide, monohydrate. The molecular formula is C₂₂H₂₆ClN₇O₂S • H₂O, which corresponds to a formula weight of 506.02 (monohydrate). The anhydrous free base has a molecular weight of 488.01. Dasatinib drug substance has the following chemical structure:



The CAS number for dasatinib monohydrate is 863127-77-9.

DESCRIPTION

Dasatinib is a white to off-white powder. The drug substance is insoluble in water (0.008 mg/mL) at 24 ± 4 °C. The pH of a saturated solution of dasatinib in water is about 6.0. Two basic ionization constants (pK_a) were determined to be 6.8 and 3.1, and one weakly acidic pK_a was determined to be 10.8. The solubilities of dasatinib in various solvents at 24 ± 4 °C are as follows: slightly soluble in ethanol (USP), methanol, polyethylene glycol 400, and propylene glycol; very slightly soluble in acetone and acetonitrile; and practically insoluble in corn oil.

SPRYCEL[®] film coated tablets contain the following inactive ingredients: lactose, microcrystalline cellulose, croscarmellose sodium, hydroxypropyl cellulose and magnesium stearate. The tablet coating contains: hypromellose, titanium dioxide and polyethylene glycol.

PHARMACOLOGY

Mechanism of Action

Dasatinib inhibits the activity of the BCR-ABL kinase and SRC-family kinases at low nanomolar or subnanomolar concentrations. Dasatinib also inhibits a number of other kinases including c-KIT, the EPHA2 receptor and the PDGFβ receptor. Unlike imatinib, it

binds not only to the inactive but also to the active conformation of the BCR-ABL kinase. This suggests a reduced propensity for acquired drug resistance due to the emergence of mutations that promote the adoption of kinase's active conformation.

Dasatinib has been demonstrated to inhibit the survival/proliferation of human leukaemic cell lines *in vitro*, and to inhibit the growth of human CML (chronic myeloid leukaemia) xenografts in SCID mice, in both imatinib-sensitive and resistant models of the disease. Antileukaemic activity was seen in dasatinib-treated mice in a model of CML with CNS involvement. Non-clinical studies show that dasatinib can overcome imatinib resistance resulting from BCR-ABL independence, most BCR-ABL kinase domain mutations, activation of alternate signalling pathways involving SRC-family kinases (LYN and FYN) and P-glycoprotein (multi-drug resistance protein 1) overexpression.

PHARMACOKINETICS

The pharmacokinetics of SPRYCEL[®] (dasatinib) were evaluated in 229 healthy subjects and in 84 patients with leukaemia.

Absorption

Dasatinib is rapidly absorbed in patients following oral administration. The absolute bioavailability of dasatinib has not been determined. Peak concentrations were observed between 0.5-3 hours. Following oral administration, the increase in the mean exposure (AUC_τ) is approximately proportional to the dose increment across doses ranging from 25 mg to 120 mg twice daily (BID).

Data from a study of 54 healthy subjects administered a single, 100 mg dose of dasatinib 30 minutes following consumption of a high-fat meal indicated a 14% increase in the mean AUC of dasatinib. Consumption of a low-fat meal 30 minutes prior to dasatinib resulted in a 21% increase in the mean AUC of dasatinib. The observed food effects are unlikely to be clinically significant.

Distribution

In patients, SPRYCEL[®] has a large apparent volume of distribution (2505 L) suggesting that the drug is extensively distributed in the extravascular space.

Metabolism

Dasatinib is extensively metabolized in humans. In a study of 8 healthy subjects administered 100 mg of [¹⁴C]-labelled dasatinib, unchanged dasatinib represented 29% of circulating radioactivity in plasma. Plasma concentration and measured *in vitro* activity indicate that metabolites of dasatinib are unlikely to play a major role in the observed pharmacology of the drug. The overall mean terminal half-life of dasatinib is approximately 5-6 hours. CYP3A4 is a major enzyme responsible for the metabolism of dasatinib.

Elimination

Elimination is predominantly in the faeces, mostly as metabolites. Following a single oral dose of [¹⁴C]-labelled dasatinib, approximately 89% of the dose was eliminated within 10 days, with 4% and 85% of the administered radioactivity recovered in the urine and faeces,

respectively. Unchanged dasatinib accounted for 0.1% and 19% of the administered dose in urine and faeces, respectively, with the remainder of the dose being metabolites.

Special Populations

Pharmacokinetic analyses of demographic data indicate that there are no clinically relevant effects of age and gender on the pharmacokinetics of SPRYCEL®.

The pharmacokinetics of SPRYCEL® have not been evaluated in paediatric patients.

The effect of hepatic impairment on the single-dose pharmacokinetics of dasatinib was assessed in 8 moderately hepatic-impaired subjects who received a 50 mg dose and 5 severely hepatic-impaired subjects who received a 20 mg dose compared to matched healthy subjects who received a 70 mg dose of dasatinib. The mean C_{max} and AUC of dasatinib adjusted for the 70 mg dose was decreased by 47% and 8%, respectively, in subjects with moderate hepatic impairment compared to subjects with normal hepatic function. In severely hepatic-impaired subjects, the mean C_{max} and AUC adjusted for the 70 mg dose was decreased by 43% and 28% respectively, compared to subjects with normal hepatic function (see PRECAUTIONS and DOSAGE AND ADMINISTRATION).

There are no clinical studies of SPRYCEL® in patients with impaired renal function. Less than 4% of dasatinib and its metabolites are excreted via the kidney (see PRECAUTIONS and DOSAGE AND ADMINISTRATION).

CLINICAL TRIALS

In the Phase I study, haematologic and cytogenetic responses were observed in all phases of CML and in Ph+ ALL in the first 84 patients treated and followed for up to 27 months. Responses were durable across all phases of CML and Ph+ ALL.

Four single-arm, uncontrolled, open-label Phase II clinical trials were conducted to determine the safety and efficacy of SPRYCEL® in patients with CML in chronic, accelerated, or myeloid blast phase, who were either resistant or intolerant to imatinib.

One randomized, comparative trial was conducted in chronic phase patients who failed initial treatment with 400 or 600 mg imatinib. The starting dose of SPRYCEL® was 70 mg twice daily. Dose modifications were allowed for improving activity or management of toxicity.

Two randomised, open-label Phase III trials were conducted to evaluate the efficacy of SPRYCEL® administered once daily compared with SPRYCEL® administered twice daily. In addition, one open-label, randomised, comparative Phase III study was conducted in adult patients with newly diagnosed chronic phase CML.

The efficacy of SPRYCEL® is based on haematological and cytogenetic response rates. Durability of response and estimated survival rates provide additional evidence of SPRYCEL® clinical benefit.

A total of 2,712 patients were evaluated in clinical trials of CML; of these 23% were ≥ 65 years of age and 5% were ≥ 75 years of age.

Chronic Phase CML - Newly Diagnosed

An international open-label, multi-centre, randomised, comparative Phase III study was conducted in adult patients with newly diagnosed chronic phase CML. Patients were randomised to receive either SPRYCEL[®] 100 mg once daily or imatinib 400 mg once daily. The primary end-point was the rate of confirmed complete cytogenetic response (cCCyR) within 12 months. Secondary endpoints included time in cCCyR (measure of durability of response), time to cCCyR, major molecular response (MMR) rate, time to MMR, progression free survival (PFS) and overall survival (OS). Other relevant efficacy results included CCyR and complete molecular response (CMR) rates.

A total of 519 patients were randomised to a treatment group: 259 to SPRYCEL[®] and 260 to imatinib. Baseline characteristics were well balanced between the two treatment groups with respect to age (median age was 46 years for the SPRYCEL[®] group and 49 years for the imatinib group with 10% and 11% of patients 65 years of age or older, respectively), gender (women 44% and 37%, respectively), and race (Caucasian 51% and 55%; Asian 42% and 37%, respectively). At baseline, the distribution of Hasford Scores was similar in the SPRYCEL[®] and imatinib treatment groups (low risk: 33% and 34%; intermediate risk 48% and 47%; high risk: 19% and 19%, respectively).

With a minimum of 12 months follow-up, 85% of patients randomised to the SPRYCEL[®] group and 81% of patients randomised to the imatinib group were still receiving first-line treatment. Discontinuation due to disease progression occurred in 3% of SPRYCEL[®]-treated patients and 5% of imatinib-treated patients. With a minimum of 60 months follow-up, 61% of patients randomised to the SPRYCEL[®] group and 63% of patients randomised to the imatinib group were still receiving first-line treatment. Discontinuation due to disease progression occurred in 7% of SPRYCEL[®]-treated patients and 9% of imatinib-treated patients.

Efficacy results are presented in Table 1. A statistically significantly greater proportion of patients in the SPRYCEL[®] group achieved a cCCyR compared with patients in the imatinib group within the first 12 months of treatment. Efficacy of SPRYCEL[®] was consistently demonstrated across different subgroups, including age, gender, and baseline Hasford score.

Table 1: Efficacy Results in a Phase III Study of Newly Diagnosed Patients with Chronic Phase CML

	SPRYCEL® n= 259	imatinib n= 260	p-value ^d
Response rate (95% CI)			
Cytogenetic Response within 12 months			
cCCyR ^a	76.8% (71.2–81.8)	66.2% (60.1–71.9)	p< 0.007*
CCyR ^b	85.3% (80.4-89.4)	73.5% (67.7-78.7)	—
Cytogenetic Response within 24 months			
cCCyR ^a	80.3%	74.2%	—
CCyR ^b	87.3%	82.3%	—
Cytogenetic Response within 36 months			
cCCyR ^a	82.6%	77.3%	—
CCyR ^b	88.0%	83.5%	—
Cytogenetic Response within 48 months			
cCCyR ^a	82.6%	78.5%	-
CCyR ^b	87.6%	83.8%	-
Cytogenetic Response within 60 months			
cCCyR ^a	83.0%	78.5%	-
CCyR ^b	88.0%	83.8%	-
Major Molecular Response^c			
12 months	52.1% (45.9-58.3)	33.8% (28.1-39.9)	p< 0.00003*
24 months	64.5% (58.3-70.3)	50% (43.8-56.2)	—
36 months	69.1% (63.1-74.7)	56.2% (49.9-62.3)	—
48 months	75.7% (70.0-80.8)	62.7% (56.5-68.6)	-
60 months	76.4% (70.8 - 81.5)	64.2% (58.1 - 70.1)	p = 0.0021 ^e
Hazard Ratio			
within 12 months (99.99% CI)			
Time-to cCCyR	1.55 (1.0-2.3)		p< 0.0001*
Time-to MMR	2.01 (1.2-3.4)		p< 0.0001*
Durability of cCCyR	0.7 (0.4-1.4)		p< 0.035**
within 24 months (95% CI)			
Time-to cCCyR	1.49 (1.22-1.82)		—
Time-to MMR	1.69 (1.34-2.12)		—
Durability of cCCyR	0.77 (0.55-1.10)		—
within 36 months (95% CI)			
Time-to cCCyR	1.48 (1.22-1.80)		—
Time-to MMR	1.59 (1.28-1.99)		—
Durability of cCCyR	0.77 (0.53-1.11)		—
within 48 months (95% CI)			
Time-to cCCyR	1.45 (1.20-1.77)		-

Time-to MMR	1.55 (1.26-1.91)	-
Durability of cCCyR	0.81 (0.56-1.17)	-
within 60 months (95% CI)		
Time-to cCCyR	1.46 (1.20 - 1.77)	p = 0.0001 ^e
Time-to MMR	1.54 (1.25 - 1.89)	p <0.0001 ^e
Durability (Time-in) cCCyR	0.79 (0.55 - 1.13)	p = 0.1983 ^e

^a Confirmed complete cytogenetic response (cCCyR) is defined as a response noted on two consecutive occasions (at least 28 days apart).

^b Cytogenetic response (CCyR) is based on a single bone marrow cytogenetic evaluation. The CCyR results refer to best unconfirmed cytogenetic response within 12 months for any number of metaphases.

^c Major molecular response (at any time) was defined as BCR-ABL ratios $\leq 0.1\%$ by RQ-PCR in peripheral blood samples standardized on the International scale. These are cumulative rates representing minimum follow-up for the timeframe specified.

^d Formal statistical comparison of cCCyR and MMR rates was only performed at the time of the primary endpoint (cCCyR within 12 months)

^e P-values of secondary endpoints are nominal, that is, for descriptive purposes, and therefore not statistically significant*Adjusted for Hasford Score and indicated statistical significance at a pre-defined nominal level of significance.

**Not significant.

CI = confidence interval

For time-to cCCyR, a hazard ratio of 1.55 indicates that a patient treated with SPRYCEL is 55% more likely to achieve a cCCyR at any time compared to a patient treated with imatinib. Similarly, for time-to MMR, a hazard ratio of 2.01 indicates a patient treated with SPRYCEL is more than two times more likely to achieve a MMR at any time compared to a patient treated with imatinib. For durability of cCCyR (time-in response), a hazard ratio of 0.7 indicates a patient treated with SPRYCEL is 30% less likely to have disease progression after achieving a cCCyR (or never achieving a cCCyR) compared to a patient treated with imatinib.

After 60 months follow-up, median time to cCCyR was 3.1 months in the 214 SPRYCEL[®] group responders and 5.8 months in the 204 imatinib group responders. Median time to MMR after 60 months follow-up was 9.3 months in the 196 SPRYCEL[®] group responders and 15.0 months in the 163 imatinib group responders. The rates of cCCyR in the SPRYCEL[®] and imatinib treatment groups, respectively, within 3 months (54% and 30%), 6 months (70% and 56%), 9 months (75% and 63%), 24 months (80% and 74%), 36 months (83% and 77%), 48 months (83% and 79%) and 60 months (83% and 79%) were consistent with the primary endpoint. The rates of MMR in the SPRYCEL[®] and imatinib treatment groups, respectively, within 3 months (8% and 0.4%), 6 months (27% and 8%), 9 months (39% and 18%), 12 months (46% and 28%), 24 months (64% and 46%), 36 months (67% and 55%), 48 months (73% and 60%) and 60 months (76% and 64%) were also consistent with the primary endpoint. With a minimum of 60 months follow up, the rate of CMR (i.e. at least 4.5-log reduction from a standardised baseline value BCR-ABL ratio $\leq 0.0032\%$) at any time was 44% versus 34% in the SPRYCEL[®] and imatinib treatment groups, respectively.

In an exploratory subgroup analysis the rate of MMR at any time in each risk group determined by Hasford score was higher in the SPRYCEL[®] group compared with the imatinib group (low risk: 90% and 69%; intermediate risk: 71% and 65%; high risk: 67% and 54%, respectively).

In an exploratory analysis, more SPRYCEL[®]-treated subjects (84%) achieved early molecular response (defined as BCR-ABL levels $\leq 10\%$ at 3 months) compared with imatinib-treated subjects (64%). Subjects achieving early molecular response had a lower risk of transformation, higher rate of progression-free survival (PFS) and higher rate of overall survival (OS), as shown in Table 2 and Table 3.

Table 2: SPRYCEL[®]-treated Subjects with BCR-ABL $\leq 10\%$ and $>10\%$ at 3 Months

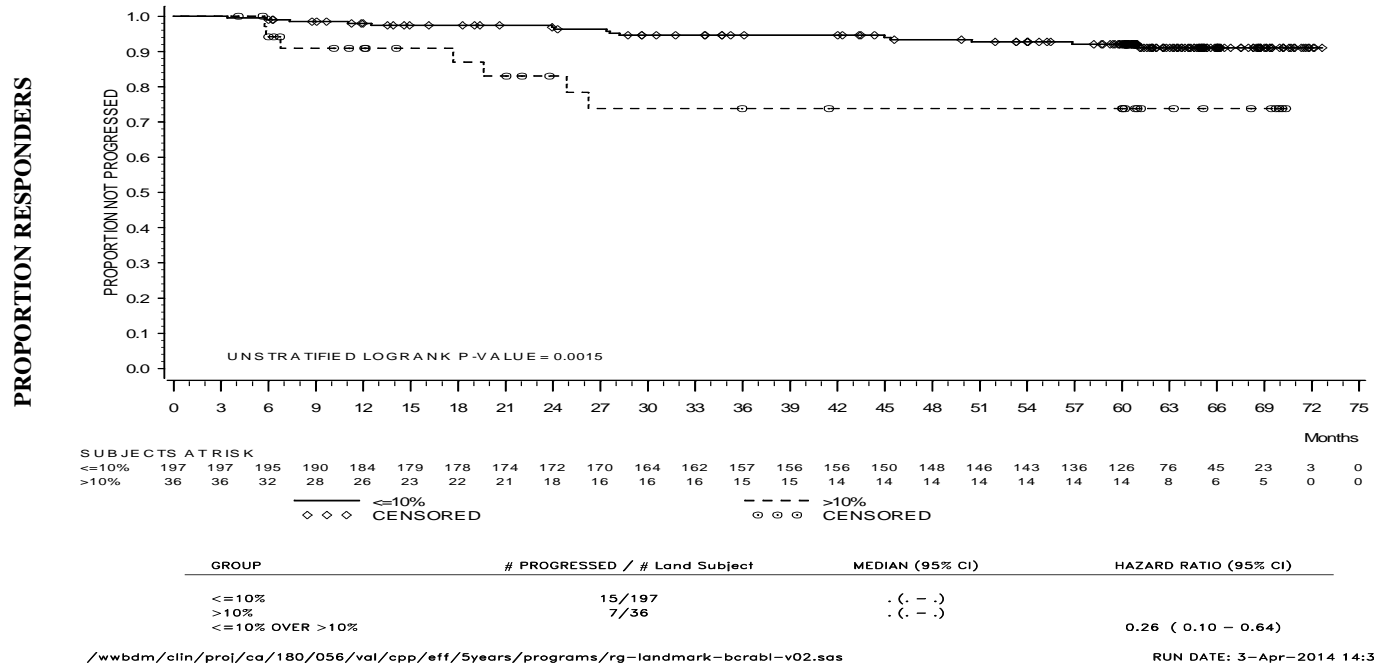
Dasatinib N = 235	Subjects with BCR-ABL $\leq 10\%$ at 3 Months	Subjects with BCR-ABL $>10\%$ at 3 Months
Number of Subjects (%)	198 (84.3)	37 (15.7)
Transformation at 60-months, n/N (%)	6/198 (3.0)	5/37 (13.5)
Rate of PFS at 60 Months (95% CI)	92.0% (89.6, 95.2)	73.8% (52.0, 86.8)
Rate of OS at 60 Months (95% CI)	93.8% (89.3, 96.4)	80.6% (63.5, 90.2)

Table 3: Imatinib-treated Subjects with BCR-ABL $\leq 10\%$ and $>10\%$ at 3 Months

Imatinib (n = 239)	Subjects with BCR-ABL $\leq 10\%$ at 3 Months	Subjects with BCR-ABL $>10\%$ at 3 Months
Number of Subjects (%)	154 (64.4)	85 (35.6)
Transformation at 60-months, n/N (%)	5/154 (3.2)	13/85 (15.3)
Rate of PFS at 60 Months (95% CI)	93.5% (87.8, 96.6)	79.3% (67.3, 87.3)
Rate of OS at 60 Months (95% CI)	95.4% (90.5, 97.8)	80.5% (70.1, 87.6)

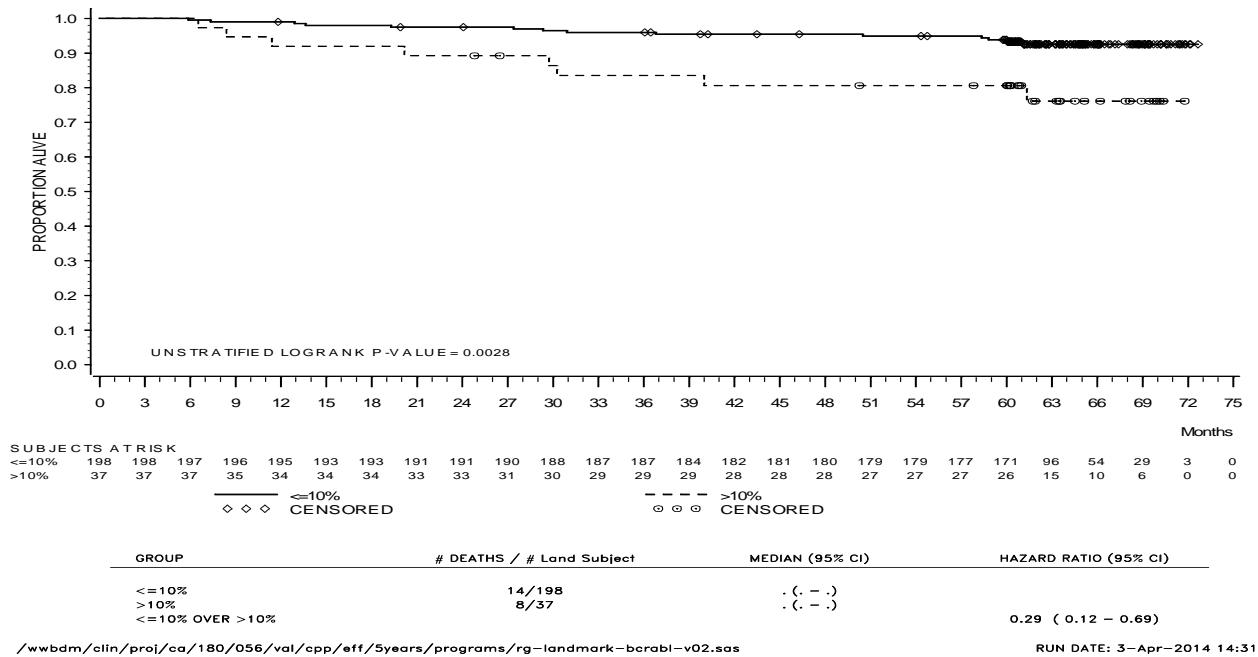
The progression-free survival rate by specific timepoint is displayed graphically in Figure 1. Rate of PFS was consistently higher in SPRYCEL[®]-treated patients who achieved BCR-ABL level ≤ 10 percent at 3 months than those who did not.

Figure 1: Landmark Plot for Progression-free Survival for SPRYCEL by BCR-ABL Level ($\leq 10\%$ or $>10\%$) at 3 Months in a Phase III Study of Newly Diagnosed Patients with Chronic Phase CML



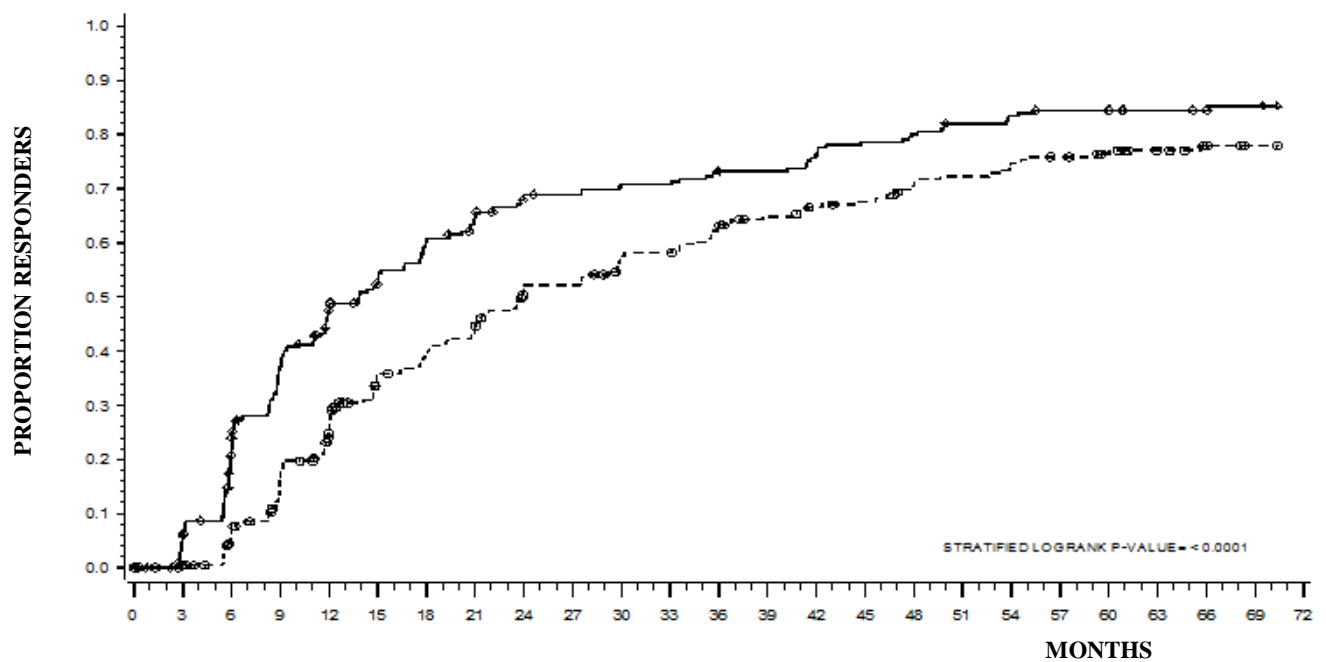
The overall survival rate by specific timepoint is displayed graphically in Figure 2. Rate of OS was consistently higher in SPRYCEL[®]-treated patients who achieved BCR-ABL level ≤ 10 percent at 3 months than those who did not.

Figure 2: Landmark Plot for Overall Survival for TRADEMARK by BCR-ABL Level ($\leq 10\%$ or $>10\%$) at 3 Months in a Phase III Study of Newly Diagnosed Patients with Chronic Phase CML



The time to MMR is displayed graphically in Figure 3. The time to MMR was consistently shorter in SPRYCEL[®]-treated subjects compared with imatinib-treated subjects.

Figure 3: Kaplan-Meier Estimate of Time to Major Molecular Response (MMR) in a Phase III Study of Newly Diagnosed Patients with Chronic Phase CML



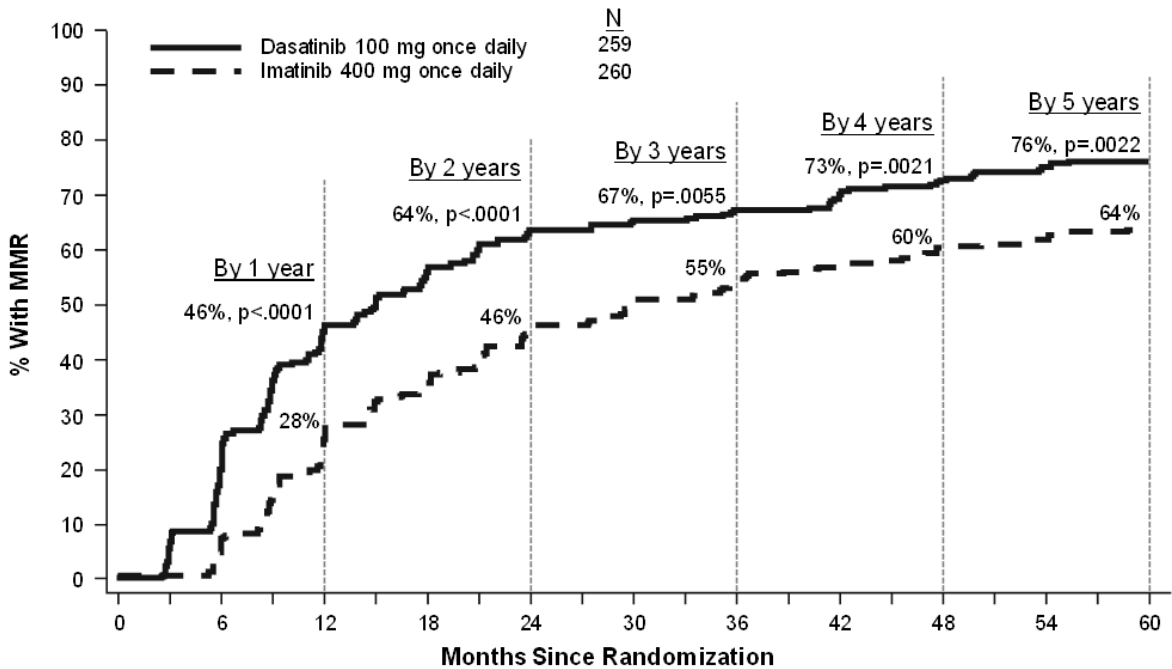
— Dasatinib
 ◇◇◇ Censored

----- Imatinib
 ⊗⊗⊗ Censored

GROUP	# RESPONDERS / # RANDOMIZED	HAZARD RATIO (95% CI)
DASATINIB	198/259	
IMATINIB	167/260	
DASATINIB OVER IMATINIB		1.54 (1.25 - 1.89)

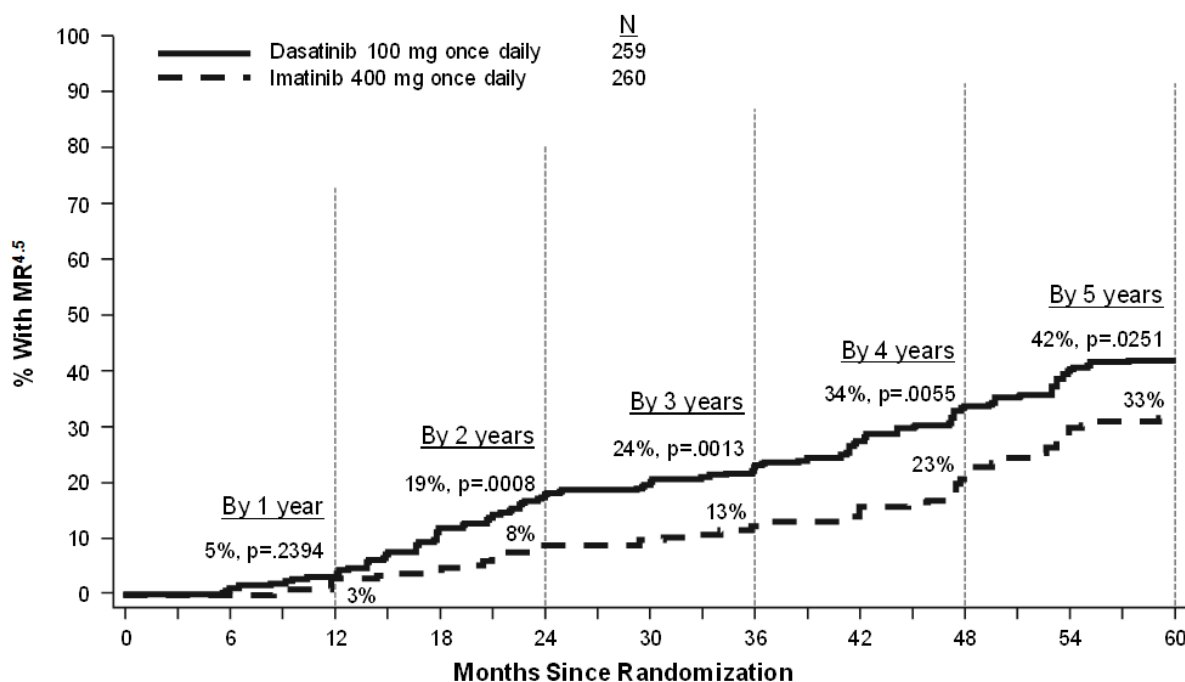
MMR rates by specific timepoint are displayed graphically in Figure 4. Rates of MMR were consistently higher in SPRYCEL[®]-treated subjects compared with imatinib-treated subjects.

Figure 4: MMR Rates Over Time - All Randomized Subjects in a Phase III Study of Newly Diagnosed Patients with Chronic Phase CML



MR4.5 rates over time are displayed graphically in Figure 5. Rate of MR4.5 over time was consistently higher in SPRYCEL[®]-treated subjects compared with imatinib-treated subjects.

Figure 5: MR4.5 Rates Over Time - All Randomized Subjects in a Phase III Study of Newly Diagnosed Patients with Chronic Phase CML



Disease progression was defined as increasing white blood cells despite appropriate therapeutic management, loss of CHR (complete haematologic response), partial CyR or CCyR, progression to accelerated phase or blast phase, or death. The estimated 60-month PFS rate was 88.9% (CI: 84.0% - 92.4%) and 89.2% (CI: 84.3% - 92.7%) for the SPRYCEL[®] and imatinib treatment groups, respectively. Transformation to accelerated or blast phase occurred less frequently with SPRYCEL[®] (n = 8; 3.1%) than with imatinib-treated patients (n = 15; 5.8%). The estimated 60-month survival rates for SPRYCEL[®] and imatinib-treated patients were 90.9% (CI: 86.6% - 93.8%) and 89.6% (CI: 85.2% - 92.8%) respectively.

In a phase III trial of newly diagnosed chronic phase CML, BCR-ABL sequencing was performed on blood samples from patients who discontinued dasatinib or imatinib therapy. Among dasatinib-treated patients the mutations detected were T315I, F317I/L and V299L. Dasatinib does not appear to be active against the T315I mutation, based on *in vitro* data.

Phase III Clinical Trials in patients with CML in chronic, accelerated, or myeloid blast phase, and Ph+ ALL who were resistant or intolerant to imatinib

Two randomised, open-label studies were conducted to evaluate the efficacy of SPRYCEL[®] administered once daily compared with SPRYCEL[®] administered twice daily: The results described in Tables 4 and 5 are based on a minimum of 24 months and 60 months follow-up after the start of dasatinib therapy.

In the non- inferiority study in chronic phase CML, the primary endpoint was MCyR (once daily vs. twice daily) in imatinib-resistant patients. The main secondary endpoint was MCyR by total daily dose level in the imatinib-resistant patients. Other secondary endpoints included duration of MCyR, progression-free survival, and overall survival. A total of 670 patients, of whom 497 were imatinib-resistant, were randomised to the SPRYCEL[®] 100 mg once daily, Sprycel V 15

140 mg once daily, 50 mg twice daily, or 70 mg twice daily group. The non-inferiority criteria were met for the primary efficacy endpoint at 6 months analysis. Results for each of the 4 individual regimens demonstrated comparable efficacy for MCyR and for a variety of secondary endpoints. At 2-Year analysis, the median duration of treatment was approximately 22 months (range <1 to 31 months). In patients with resistant or intolerant chronic phase CML, the median duration of treatment for patients still on therapy (n=205) was 59 months (range 28 to 66 months).

Efficacy results at 2 year analysis are presented in Tables 4 and 5. Efficacy was achieved across all SPRYCEL[®] treatment groups with the once daily schedule demonstrating comparable efficacy (non-inferiority) to the twice daily schedule on the primary efficacy endpoint (difference in MCyR 1.9%; 95% confidence interval [-6.8% - 10.6%]). However, the 100 mg once daily regimen had improved tolerability.

Table 4: Efficacy of SPRYCEL[®] in Phase III Dose-Optimisation Study: Chronic Phase CML (2 year results)

	100 mg once daily
All Patients	n = 167
Imatinib-Resistant Patients	n = 124
Haematologic Response Rate^b (%) (95% CI)	
CHR	92% (86-95)
Cytogenetic Response^c (%) (95% CI)	
MCyR	
All Patients	63% (56-71)
Imatinib-Resistant Patients	59% (50-68)
CCyR	
All Patients	50% (42-58)
Imatinib-Resistant Patients	44% (35-53)
Major Molecular Response^d (%) (95% CI)	
All Patients	69% (58-79)
Imatinib-Resistant Patients	72% (58-83)

^a Not a recommended starting dosage of SPRYCEL[®] for chronic phase CML

^b **Haematologic response criteria** (all responses confirmed after 4 weeks):

Complete haematologic response (CHR) (chronic CML): WBC ≤ institutional ULN, platelets < 450 x 10⁹/L, no blasts or promyelocytes in peripheral blood, <5% myelocytes plus metamyelocytes in peripheral blood, basophils in peripheral blood < 20%, and no extramedullary involvement.

^c **Cytogenetic response criteria:** complete (0% Ph+ metaphases) or partial (>0%–35%). MCyR (0%–35%) combines both complete and partial responses.

^d Major molecular response criteria: Defined as BCR-ABL/control transcripts ≤ 0.1% by RQ-PCR in peripheral blood samples.

Molecular response was evaluated in a subset of assessed patients who had a CCyR

CI = confidence interval; ULN = upper limit of normal range.

Efficacy was also assessed in patients who were intolerant to imatinib. In this population of patients who received 100 mg once daily, MCyR was achieved in 77% and CCyR in 67% with a minimum of 2 years follow-up.

Approximately 20% of subjects remained on study therapy through study completion (i.e. a minimum of 7 years), discontinuing study treatment due to study closure. Table 5 represents

the comparative data (1 – 7 years), for the recommended starting dose 100 mg once daily in CML chronic phase.

Table 5: Long Term Efficacy of SPRYCEL® in Phase III Dose Optimization study: Imatinib Resistant or Intolerant Chronic Phase CML^a

	Minimum Follow-up Period			
	1 year	2 years	5 years	7 years
Major Molecular Response				
All subjects	NA	37% (57/154)	44% (71/160)	46% (73/160)
Imatinib-resistant patients	NA	35% (41/117)	42% (50/120)	43% (51/120)
Imatinib-intolerant patients	NA	43% (16/37)	53% (21/40)	55% (22/40)
Progression-Free Survival^b				
All subjects	90% (86-95)	80% (73, 87)	51% (41, 60)	42% (33, 51)
Imatinib-resistant patients	88% (82, 94)	77% (68, 85)	49% (39, 59)	39% (29, 49)
Imatinib-intolerant patients	97% (92, 100)	87% (76, 99)	56% (37, 76)	51% (32, 67)
Overall Survival				
All subjects	96% (93, 99)	91% (86, 96)	78% (72, 85)	65% (56, 72)
Imatinib-resistant patients	94% (90, 98)	89% (84, 95)	77% (69, 85)	63% (53, 71)
Imatinib-intolerant patients	100% (100, 100)	95% (88, 100)	82% (70, 94)	70% (52, 82)

^a Results reported in recommended starting dose of 100 mg once daily.

^b Progression was defined as increasing WBC count, loss of CHR or MCyR, $\geq 30\%$ increase in Ph+ metaphases, confirmed AP/BP disease or death. PFS was analysed on an intent-to-treat principle and patients were followed to events including subsequent therapy.

In the Phase III, randomized, open-label study in patients with advanced phase CML and Ph+ALL, whose disease was resistant to or who were intolerant to imatinib, the primary endpoint was MaHR. A total of 611 patients were randomised to either the SPRYCEL® 140 mg once daily or 70 mg twice daily group. Median duration of treatment was approximately 6 months (range <1-31 months).

The once daily schedule demonstrated comparable efficacy (non-inferiority) to the twice daily schedule on the primary efficacy endpoint (difference in MaHR 0.8%; 95% confidence interval [-7.1%- 8.7%]); The response rates are presented in Table 6.

Table 6: Efficacy of SPRYCEL[®] in Phase III Dose-Optimisation Study: Advanced Phase CML and Ph+ ALL (2 year results)

	140 mg Once Daily			
	Accelerated (n= 158)	Myeloid Blast (n= 75)	Lymphoid Blast (n= 33)	Ph+ALL (n= 40)
MaHR^b	66%	28%	42%	38%
(95% CI)	(59-74)	(18-40)	(26-61)	(23-54)
CHR^b	47%	17%	21%	33%
(95% CI)	(40-56)	(10-28)	(9-39)	(19-49)
NEL^b	19%	11%	21%	5%
(95% CI)	(13-26)	(5-20)	(9-39)	(1-17)
MCyR^c	39%	28%	52%	70%
(95% CI)	(31-47)	(18-40)	(34-69)	(54-83)
CCyR	32%	17%	39%	50%
(95% CI)	(25-40)	(10-28)	(23-58)	(34-66)

^aResults reported in recommended starting dose of 140 mg once daily.

^b Haematologic response criteria (all responses confirmed after 4 weeks): Major haematologic response (MaHR) = complete haematologic response (CHR) + no evidence of leukaemia (NEL).

CHR: WBC ≤ institutional ULN, ANC ≥ 1.0 x 10⁹/L, platelets ≥ 100 x 10⁹/L, no blasts or promyelocytes in peripheral blood, bone marrow blasts ≤ 5%, < 5% myelocytes plus metamyelocytes in peripheral blood, basophils in peripheral blood < 20%, and no extramedullary involvement.

NEL: same criteria as for CHR but ANC ≥ 0.5 x 10⁹/L and < 1.0 x 10⁹/L, or platelets ≥ 20 x 10⁹/L and ≤ 100 x 10⁹/L.

^c MCyR combines both complete (0% Ph+ metaphases) and partial (> 0%-35%) responses.

CI = confidence interval ULN = upper limit of normal range.

In patients with accelerated phase CML treated with the 140 mg once daily regimen, the median duration of MaHR and the median overall survival in patients with accelerated phase CML was not reached for either group; the median PFS was 25 months and 26 months for the 140 mg once daily group and the 70 mg twice daily group, respectively; and the median overall survival was not reached for the 140 mg once daily group and 31 months for the 70 mg twice daily group.

In patients with myeloid blast phase CML treated with the 140 mg once daily regimen the median duration of MaHR was 8 months, and 9 months for the 140 mg once daily group and the 70 mg twice daily group, respectively; the median PFS was 4 months for both groups; and the median overall survival was 8 months for both groups. In patients with lymphoid blast phase CML, the median duration of MaHR was 5 months and 8 months for the 140 mg once daily group and the 70 mg twice daily group, respectively; the median PFS was 5 months for both groups, and the median overall survival was 11 months and 9 months, respectively.

In patients with Ph+ALL treated with the 140 mg once daily regimen, the median duration of MaHR was 5 months and 12 months for the 140 mg once daily group and the 70 mg twice daily group, respectively; the median PFS was 4 months and 3 months respectively, and the median overall survival was 7 months and 9 months, respectively.

INDICATIONS

SPRYCEL[®] (dasatinib) is indicated for the treatment of adults aged 18 years or over with newly diagnosed Philadelphia chromosome positive (Ph+) chronic myeloid leukaemia in the chronic phase.

SPRYCEL® (dasatinib) is indicated for the treatment of adults aged 18 years or over with chronic, accelerated or myeloid or lymphoid blast phase chronic myeloid leukaemia with resistance or intolerance to prior therapy including imatinib.

SPRYCEL® is indicated for the treatment of adults aged 18 years or over with Philadelphia chromosome positive acute lymphoblastic leukaemia with resistance or intolerance to prior therapy.

CONTRAINDICATIONS

Use of SPRYCEL® is contraindicated in patients with hypersensitivity to dasatinib or to any other component of SPRYCEL®.

PRECAUTIONS

General

Myelosuppression

Treatment with SPRYCEL® is associated with thrombocytopenia, neutropenia and anaemia, which occur earlier and more frequently in patients with advanced phase CML or Ph+ ALL than in patients with chronic phase CML. In patients with chronic phase CML, complete blood counts (CBCs) should be performed every two weeks for 12 weeks, then every 3 months thereafter, or as clinically indicated. In patients with advanced phase CML or Ph+ ALL, CBCs should be performed weekly for the first 2 months and then monthly thereafter or as clinically indicated. Myelosuppression is generally reversible and usually managed by withholding SPRYCEL® temporarily or dose reduction (see DOSAGE and ADMINISTRATION and Effect on Laboratory Tests). CTC Grade 3 or 4 (severe) cases of anaemia were managed with blood transfusions.

Bleeding

In the pooled population of Phase III studies in patients with chronic phase CML, 5 patients (1%) receiving SPRYCEL® at the recommended dose 100 mg daily (n=548) had drug related Grade 3 or 4 haemorrhage. In the pooled population of clinical studies in patients with advanced phase CML or Ph+ ALL, severe (Grade 3 – 5) drug-related CNS haemorrhage, including fatalities, occurred in 1% of patients receiving SPRYCEL® at the recommended dose 140 mg daily (n=304). Eight cases were fatal and 6 of them were associated with Common Toxicity Criteria (CTC) Grade 4 thrombocytopenia. Grade 3 or 4 drug-related gastrointestinal haemorrhage, including fatalities, occurred in 6% of patients and generally required treatment interruptions and transfusions. Other cases of Grade 3 or 4 drug-related haemorrhage occurred in 2% of patients treated with dasatinib 140 mg daily dose. Most bleeding reactions in clinical studies were typically associated with Grade 3 or 4 thrombocytopenia. Additionally, *in vitro* and *in vivo* platelet assays suggest that SPRYCEL® treatment reversibly affects platelet activation.

Caution should be exercised if patients are required to take medications that inhibit platelet function or anticoagulants.

Fluid Retention

SPRYCEL[®] is associated with fluid retention. After 5 years of follow-up in the Phase III clinical study in patients with newly diagnosed chronic phase CML (n=258), drug-related Grade 3 or 4 fluid retention was reported in 13 patients (5%) receiving SPRYCEL[®] compared to 2 patients (1%) receiving imatinib (n=258) (see ADVERSE EFFECTS). The cumulative incidence of drug-related pleural effusion (all Grades) in dasatinib-treated subjects increased over time; 7.8% new AEs of pleural effusion occurred in the first year of therapy followed by a smaller, yet consistent increase of ~5% of subjects/year after 24, 36, 48, and 60 months of treatment, respectively. The majority were low grade. In the pooled population of patients with chronic phase CML (n=548), severe (Grade 3 – 4) drug-related fluid retention occurred in 32 (6%) patients receiving SPRYCEL[®] at the 100 mg once daily recommended dose.

In clinical studies in patients with advanced phase CML or Ph+ ALL receiving SPRYCEL[®] at the approved dose 140 mg daily (n=304), Grade 3 or 4 drug-related fluid retention was reported in 8% of patients, including severe pleural and pericardial effusion reported in 7% and 1% of patients, respectively. Severe congestive heart failure/cardiac dysfunction was reported in 1% of patients. In these patients, severe pulmonary oedema and severe pulmonary hypertension were each reported in 1% of patients.

Patients who develop symptoms suggestive of pleural effusion or other fluid retention such as new or worsened dyspnoea on exertion or at rest, pleuritic chest pain, or dry cough should be evaluated promptly with chest X-ray or additional diagnostic imaging as appropriate. Fluid retention reactions were typically managed with dasatinib dose interruption or reduction and supportive care measures that may include diuretics or short courses of steroids. Severe pleural effusion may require thoracentesis and oxygen therapy. Dose modification should be considered. While the safety profile of SPRYCEL[®] in the elderly population was similar to that in the younger population, patients aged 65 years and older are more likely to experience pleural effusion, congestive heart failure, gastrointestinal bleeding, and dyspnoea, and should be monitored closely.

QT Prolongation

In vitro data showing inhibition of the hERG K⁺ channel expressed in mammalian cells and action potential prolongation in rabbit Purkinje fibres by dasatinib and a number of its metabolites suggest that dasatinib has the potential to prolong cardiac ventricular repolarisation (QT interval).

After 5 years of follow-up in the Phase III study in newly diagnosed chronic phase CML, 1 patient (< 1%) in each of the SPRYCEL[®] (n=258) and imatinib (n=258) treatment groups had QTc prolongation reported as an adverse reaction. The median changes in QTcF from baseline were 3.0 msec in SPRYCEL[®]-treated patients compared to 8.2 msec in imatinib-treated patients. One patient (< 1%) in each group experienced a QTcF > 500 msec. In 865 patients with leukaemia treated with SPRYCEL[®] in Phase II, single-arm clinical studies, the mean QTc interval changes from baseline using Fridericia's method (QTcF) were 4-6 msec; the upper 95% confidence intervals for all mean changes from baseline were <7 msec. Of the 2,182 patients with resistance or intolerance to prior imatinib therapy treated with SPRYCEL[®], 15 (1%) had QT prolongation reported as an adverse reaction. Twenty-one (21) of these patients (1%) experienced a QTcF >500 msec.

SPRYCEL[®] should be administered with caution in patients who have or may develop

prolongation of QTc. These include patients with hypokalaemia or hypomagnesaemia, patients with congenital long QT syndrome, patients taking anti-arrhythmic medicines or other medicinal products which lead to QT prolongation and cumulative high dose anthracycline therapy. Hypokalaemia or hypomagnesaemia should be corrected prior to SPRYCEL[®] administration.

Cardiac Adverse Reactions

SPRYCEL[®] was studied in a randomised trial of 519 patients with newly diagnosed CML in chronic phase which included patients with prior cardiac disease. The cardiac adverse reactions of congestive heart failure/cardiac dysfunction (1.9%), pericardial effusion (4.3%), arrhythmias (1.2%), palpitations (1.9%), QT prolongation (0.4%) and myocardial infarction (0.4%) (including fatal) were reported in patients taking SPRYCEL[®] (n=258). Adverse cardiac reactions were more frequent in patients with risk factors or a previous medical history of cardiac disease. Patients with risk factors or a history of cardiac disease should be monitored carefully for signs or symptoms consistent with cardiac dysfunction and should be evaluated and treated appropriately.

Patients with uncontrolled or significant cardiovascular disease were not included in the clinical studies.

Pulmonary Arterial Hypertension

Pulmonary arterial hypertension (PAH), confirmed by right heart catheterization, has been reported in association with SPRYCEL[®] treatment. In these cases, PAH was reported after initiation of SPRYCEL[®] therapy, including after more than one year of treatment. Patients with PAH reported during SPRYCEL[®] treatment were often taking concomitant medications or had co-morbidities in addition to the underlying malignancy.

Patients should be evaluated for signs and symptoms of underlying cardiopulmonary disease prior to initiating SPRYCEL[®] therapy. Patients who develop dyspnoea and fatigue after initiation of therapy should be evaluated for more common etiologies including pleural effusion, pulmonary oedema, anaemia, or lung infiltration. During this evaluation, guidelines for non-hematologic adverse reactions should be followed (see DOSAGE AND ADMINISTRATION): if the adverse reaction is severe, treatment must be withheld until the event has resolved or improved. If no alternative diagnosis is found, the diagnosis of PAH should be considered. If PAH is confirmed, SPRYCEL[®] should be permanently discontinued. Follow up should be performed according to standard practice guidelines. Improvements in hemodynamic and clinical parameters have been observed in SPRYCEL[®] treated patients with PAH following cessation of SPRYCEL[®] therapy.

Hepatitis B Virus Reactivation

BCR-ABL TKIs have been associated with hepatitis B virus (HBV) reactivation including individual case reports for SPRYCEL[®]. In some instances, HBV reactivation occurring in conjunction with other BCR-ABL TKIs resulted in acute hepatic failure or fulminant hepatitis leading to liver transplantation or a fatal outcome.

Screening for HBV should be considered in accordance with published guidelines before starting therapy with SPRYCEL[®]. Consultation with a physician with expertise in the treatment of HBV is recommended for patients who test positive for HBV serology.

Patients who are carriers of HBV and require treatment with BCR-ABL TKIs should be closely monitored for clinical and laboratory signs of active HBV infection throughout

therapy and for several months following termination of therapy. In patients who develop reactivation of HBV while receiving SPRYCEL®, prompt consultation with a physician with expertise in the treatment of HBV is recommended.

Severe Dermatologic Reactions

Individual cases of severe mucocutaneous dermatologic reactions, including Stevens-Johnson syndrome and erythema multiforme, have been reported with the use of SPRYCEL®. SPRYCEL® should be permanently discontinued in patients who experience a severe mucocutaneous reaction during treatment if no other etiology can be identified.

Lactose Content

SPRYCEL® contains 135 mg of lactose monohydrate in a 100 mg daily dose and 189 mg of lactose monohydrate in a 140 mg daily dose.

Effects on Fertility

Dasatinib did not affect male or female fertility in a conventional rat fertility and early embryonic development study at approximately 1x human clinical exposure (100 or 140 mg dose). However, embryoletality was evident when dams were treated at these doses. Dasatinib caused atrophy/degeneration of the testis in rats and monkeys and an increase in the number of corpora lutea in the ovaries in rats at doses producing plasma exposure levels below or close to that anticipated in patients receiving SPRYCEL® therapy. Data evaluating reproductive toxicity in male patients taking SPRYCEL® is limited (see USE IN PREGNANCY).

Use in Pregnancy

Pregnancy Category D

Dasatinib may cause fetal harm when administered to a pregnant woman (see EMBRYOFETAL TOXICITY). In non-clinical studies, at exposure levels that are readily achievable in humans receiving therapeutic doses of 100 mg of SPRYCEL® serious embryo fetal toxicity was observed in both pregnant rats and rabbits. Malformations and fetal death were observed in rats treated with dasatinib.

SPRYCEL® is therefore not recommended for use in women who are pregnant or contemplating pregnancy. Women must be advised to avoid becoming pregnant while on therapy. If SPRYCEL® is used during pregnancy, or if the patient becomes pregnant while taking SPRYCEL®, the patient should be apprised of the potential hazard to the fetus.

The potential effects of SPRYCEL® on sperm have been evaluated in an oral study of fertility and early embryonic development in rats. Dasatinib is not a reproductive toxicant in male rats at clinically relevant exposures (see EFFECTS ON FERTILITY). However, data evaluating reproductive toxicity in male patients taking SPRYCEL® are limited.

Sexually active male or female patients of child bearing potential taking SPRYCEL® should use adequate contraception.

Embryofetal Toxicity

Dasatinib can cause fetal harm when administered to a pregnant woman. There have been post-marketing reports of spontaneous abortion and fetal and infant anomalies from women who have taken SPRYCEL[®] during pregnancy.

Use in Lactation

It is unknown whether SPRYCEL[®] is excreted in human milk. Women who are taking SPRYCEL[®] should not breastfeed. In an exploratory peri- and postnatal development study in rats, dasatinib was detectable in the plasma of breast-fed pups with levels 30-40% of the maternal levels. Pleural effusion and deaths were seen in maternally-exposed rat pups, indicating indirect exposure of dasatinib was incompatible with pup survival, even at sub-therapeutic maternal exposure.

Paediatric Use

The safety and efficacy of SPRYCEL[®] in patients <18 years of age have not been established.

Use in the Elderly

Of the 2,712 patients in clinical studies of SPRYCEL[®], 617 (23%) were 65 years of age and older and 123 (5%) were 75 years of age and older.

Patients aged 65 years and older are more likely to experience the commonly reported adverse reactions appetite disturbance (14.5% vs 8.0%), fatigue (27.4% vs 19.7%), pleural effusion (46.2 vs 28.4), cough (13.6% vs 8.4%), and dyspnoea (34.5% vs 17.7%), and more likely to experience the less frequently reported adverse events abdominal distention (3.9% vs 2.9%), dizziness (7.1% vs 4.6%), lower gastrointestinal haemorrhage (2.4% vs 0.7%), pericardial effusion (7.6% vs 4.9%), congestive heart failure (3.1% vs 0.7%) and weight decrease (7.5% vs 3.7%), and should be monitored closely.

Comparisons based on efficacy are based on limited number of subjects in specific age groups in individual studies, however similar rates of cCCyR and MMR were observed between older and younger patients.

Genotoxicity

Dasatinib was not mutagenic when tested in *in vitro* bacterial cell assays (Ames test) and was not clastogenic in an *in vivo* rat micronucleus study. Clastogenicity was observed with dasatinib *in vitro* in assays with Chinese hamster ovary cells in the absence and presence of metabolic activation.

Carcinogenicity

In a two year carcinogenicity study, rats were administered oral doses of dasatinib at 0.3, 1, and 3 mg/kg/day. The highest dose resulted in a plasma drug exposure (AUC) level generally equivalent to or slightly lower than calculated human exposure at the recommended range of starting doses 100 mg or 140 mg daily. A statistically significant increase in the combined incidence of squamous cell carcinomas and papillomas in the uterus and cervix of high-dose Sprycel V 15

female rats and of prostate adenoma in low-dose male rats was noted.

Effect on Laboratory Tests

Haematology and Biochemistry in patients with newly diagnosed chronic phase CML

The comparative frequency of Grade 3 and 4 laboratory abnormalities in patients with newly diagnosed chronic phase CML is presented in Table 7. There were no discontinuations of SPRYCEL[®] therapy due to the biochemical laboratory parameters.

Table 7: CTC Grade 3/4 Laboratory Abnormalities in a Phase III Study of Patients with Newly Diagnosed Chronic Phase

	SPRYCEL [®] n= 258	imatinib n= 258
Percent (%) of Patients		
Haematology Parameters		
Neutropenia	29	24
Thrombocytopenia	22	14
Anaemia	13	9
Biochemistry Parameters		
Hypophosphataemia	7	31
Hypokalaemia	0	3
Hypocalcaemia	4	3
Elevated SGPT (ALT)	< 1	2
Elevated SGOT (AST)	< 1	1
Elevated Bilirubin	1	0
Elevated Creatinine	1	1

CTC grades: neutropenia (Grade 3 $\geq 0.5 - < 1.0 \times 10^9/l$, Grade 4 $< 0.5 \times 10^9/l$); thrombocytopenia (Grade 3 $\geq 25 - < 50 \times 10^9/l$, Grade 4 $< 25 \times 10^9/l$); anaemia (haemoglobin Grade 3 $\geq 65 - < 80$ g/l, Grade 4 < 65 g/l); elevated creatinine (Grade 3 $> 3 - 6 \times$ upper limit of normal range (ULN), Grade 4 $> 6 \times$ ULN); elevated bilirubin (Grade 3 $> 3 - 10 \times$ ULN, Grade 4 $> 10 \times$ ULN); elevated SGOT or SGPT (Grade 3 $> 5 - 20 \times$ ULN, Grade 4 $> 20 \times$ ULN); hypocalcaemia (Grade 3 $< 7.0 - 6.0$ mg/dl, Grade 4 < 6.0 mg/dl); hypophosphataemia (Grade 3 $< 2.0 - 1.0$ mg/dl, Grade 4 < 1.0 mg/dl); hypokalaemia (Grade 3 $< 3.0 - 2.5$ mmol/l, Grade 4 < 2.5 mmol/l).

Haematology and Biochemistry in patients with resistance or intolerance to prior imatinib therapy:

Table 8 shows laboratory findings from clinical trials in CML patients with imatinib resistance or intolerance received at 24 months of follow up.

Table 8: CTC Grades 3/4 Laboratory Abnormalities in Studies of Patients with CML Resistant or Intolerant to Prior Imatinib Therapy^a

	Chronic Phase ^b (n=165)	Accelerated Phase ^c (n=157)	Myeloid Blast Phase ^c (n=74)	Lymphoid Blast Phase ^c (n=33)	Ph+ ALL ^c (n=40)
Percent (%) of Patients					
Haematology Parameters					
Neutropenia	35	58	77	79	67
Thrombocytopenia	23	63	78	85	72
Anaemia	13	47	74	52	36
Biochemistry Parameters					
Hypophosphataemia	10	13	12	18	16
Hypokalaemia	2	7	11	15	8
Hypocalcaemia	<1	4	9	12	5
Elevated SGPT (ALT)	0	2	5	3	8
Elevated SGOT (AST)	<1	0	4	3	3
Elevated Bilirubin	<1	1	3	6	3
Elevated Creatinine	0	2	8	0	0

^a Phase III dose optimisation study results reported at 2 years study follow up

^b CA 180-034 study results in recommended starting dose of 100 mg once daily

^c CA 180-035 study results in recommended starting dose of 140 mg once daily

CTC grades: neutropenia (Grade 3 ≥ 0.5 – $< 1.0 \times 10^9/L$, Grade 4 $< 0.5 \times 10^9/L$); thrombocytopenia (Grade 3 ≥ 25 – $< 50 \times 10^9/L$, Grade 4 $< 25 \times 10^9/L$); anaemia (hemoglobin Grade 3 ≥ 65 – < 80 g/L, Grade 4 < 65 g/L); elevated creatinine (Grade 3 > 3 – $6 \times$ upper limit of normal range (ULN), Grade 4 $> 6 \times$ ULN); elevated bilirubin (Grade 3 > 3 – $10 \times$ ULN, Grade 4 $> 10 \times$ ULN); elevated SGOT or SGPT (Grade 3 > 5 – $20 \times$ ULN, Grade 4 $> 20 \times$ ULN); hypocalcaemia (Grade 3 < 7.0 – 6.0 mg/dL, Grade 4 < 6.0 mg/dL); hypophosphataemia (Grade 3 < 2.0 – 1.0 mg/dL, Grade 4 < 1.0 mg/dL); hypokalaemia (Grade 3 < 3.0 – 2.5 mmol/L, Grade 4 < 2.5 mmol/L).

Myelosuppression was commonly reported in all patient populations. In newly diagnosed chronic phase CML, myelosuppression was less frequently reported than in chronic phase CML patients with resistance or intolerance to prior imatinib therapy. The frequency of Grade 3 or 4 neutropenia, thrombocytopenia, and anaemia was higher in patients with advanced CML or Ph+ ALL than in chronic phase CML.

In patients who experienced Grade 3 or 4 myelosuppression, recovery generally occurred following dose interruption or reduction; permanent discontinuation of treatment occurred in 2% of newly diagnosed chronic phase CML patients in the Phase III study and in 5% of patients with resistance or intolerance to prior imatinib therapy in the Phase III study.

Grade 3 or 4 elevations in transaminases or bilirubin and Grade 3 or 4 hypocalcaemia, hypokalaemia, and hypophosphataemia were reported in all phases of CML but were reported with an increased frequency in patients with myeloid or lymphoid blast phase CML and Ph+ ALL. Elevations in transaminases or bilirubin were usually managed with dose reduction or interruption. In general, decreased calcium levels were not associated with clinical symptoms. Patients developing Grade 3 or 4 hypocalcaemia often had recovery with oral calcium supplementation.

Hepatic Impairment

Based on the findings from a single-dose pharmacokinetic study, patients with mild, moderate or severe hepatic impairment may receive the recommended starting dose (see DOSAGE and ADMINISTRATION and PHARMACOKINETICS- Special Populations). Due to the limitations of this clinical study, caution is recommended when SPRYCEL[®] is administered to patients with hepatic impairment.

Renal Impairment

There are currently no clinical studies with SPRYCEL[®] in patients with impaired renal function (the study in patients with newly diagnosed chronic phase CML excluded patients with serum creatinine > 3 times the upper limit of the normal range, and clinical studies in patients with chronic phase CML with resistance or intolerance to prior imatinib therapy have excluded patients with serum creatinine concentration >1.5 times the upper limit of the normal range). Dasatinib and its metabolites are minimally excreted via the kidney. Since the renal excretion of unchanged dasatinib and its metabolites is <4%, a decrease in total body clearance is not expected in patients with renal insufficiency.

INTERACTIONS WITH OTHER MEDICINES

Drugs that may increase dasatinib plasma concentrations

CYP3A4 Inhibitors: *In vitro*, dasatinib is a CYP3A4 substrate. Concomitant use of SPRYCEL[®] and substances that potently inhibit CYP3A4 (e.g. ketoconazole, itraconazole, erythromycin, clarithromycin, ritonavir, atazanavir, lopinavir, grapefruit juice) may increase exposure to dasatinib. Therefore, in patients receiving treatment with SPRYCEL[®], systemic administration of a potent CYP3A4 inhibitor is not recommended. Selection of an alternate concomitant medication with no or minimal CYP3A4 inhibition potential is recommended. If systemic administration of a potent CYP3A4 inhibitor cannot be avoided, the patient should be closely monitored for toxicity.

Drugs that may decrease dasatinib plasma concentrations

CYP3A4 Inducers: Drugs that induce CYP3A4 activity may increase metabolism and decrease dasatinib plasma concentration. Therefore, concomitant use of potent CYP3A4 inducers (e.g., dexamethasone, phenytoin, carbamazepine, rifampicin, phenobarbital or *Hypericum perforatum*, also known as St. John's Wort) with SPRYCEL[®] is not recommended. In healthy subjects, the concomitant use of SPRYCEL[®] and rifampicin, a potent CYP3A4 inducer, resulted in a five-fold decrease in dasatinib exposure. In patients for whom rifampicin or other CYP3A4 inducers are indicated, alternative agents with less enzyme induction potential should be used.

Antacids: Non-clinical data demonstrate that the solubility of dasatinib is pH dependent. In healthy subjects, the concomitant use of aluminium hydroxide/magnesium hydroxide antacids with SPRYCEL[®] reduced the AUC of a single dose of SPRYCEL[®] by 55% and the C_{max} by 58%. However, when antacids were administered 2 hours prior to a single dose of SPRYCEL[®], no relevant changes in SPRYCEL[®] concentration or exposure were observed. Thus, antacids may be administered up to 2 hours prior to or 2 hours following SPRYCEL[®]. Simultaneous administration of SPRYCEL[®] with antacids should be avoided.

Histamine-2 Antagonists /Proton Pump Inhibitors: Long-term suppression of gastric secretion by Histamine-2 Antagonists or proton pump inhibitors (e.g. famotidine and omeprazole) is likely to reduce dasatinib exposure. The concomitant use of Histamine-2 Antagonists or proton pump inhibitors with SPRYCEL[®] is not recommended. In a single-dose study in healthy subjects, the administration of famotidine 10 hours prior to a single dose of SPRYCEL[®] reduced dasatinib exposure by 61%. The use of antacids should be considered in place of Histamine-2 Antagonists or proton pump inhibitors in patients receiving SPRYCEL[®] therapy.

Drugs that may have their plasma concentration altered by dasatinib

CYP3A4 Substrates: In a study in healthy subjects, a single 100 mg dose of SPRYCEL[®] increased exposure to simvastatin, a known CYP3A4 substrate, by 20%. Therefore, CYP3A4 substrates known to have a narrow therapeutic index such as astemizole, terfenadine, cisapride, pimozone, quinidine, bepridil or ergot alkaloids (ergotamine, dihydroergotamine) should be administered with caution in patients receiving SPRYCEL[®]. (See PHARMACOLOGY).

In vitro data indicate a potential risk for interaction with CYP2C8 substrates, such as glitazones.

ADVERSE EFFECTS

The data described below reflect exposure to SPRYCEL[®] at all doses studied in 324 patients with newly diagnosed chronic phase CML and in 2388 patients with imatinib resistant or intolerant chronic or advanced phase CML or Ph+ ALL. The median duration of therapy in 2712 SPRYCEL[®] treated patients was 19.2 months (range 0-93.2 months).

In the Phase III study of patients with newly diagnosed chronic phase CML the median duration of therapy was approximately 60 months for both SPRYCEL[®] (range 0.03 to 72.7 months) and imatinib (range 0.3 to 74.6 months). The median duration of therapy in 1618 patients with chronic phase CML was 29 months (range 0 to 92.9 months). In 1094 patients with advanced phase CML or Ph+ ALL, the median duration of treatment for patients was 6.2 months (range 0 to 93.2 months).

The majority of patients treated with SPRYCEL[®], regardless of dose or schedule, experienced adverse reactions at some time. In the overall population of 2712 SPRYCEL[®]-treated subjects, 520 (19%) experience adverse drug reactions leading to treatment discontinuation.

In the Phase III study in patients with newly diagnosed chronic phase CML, treatment was discontinued for drug-related adverse reactions in 14% of SPRYCEL[®]-treated patients and 7% of imatinib-treated patients with a minimum of 60 months follow-up. Among the pooled population of 1618 SPRYCEL[®]-treated subjects with chronic phase CML, adverse reactions leading to discontinuation were reported in 329 (20.3%) subjects, and among the 1094 SPRYCEL[®]-treated subjects with advanced phase disease, adverse drug reactions leading to discontinuation were reported in 191 (17.5%) subjects.

The majority of imatinib-intolerant patients in chronic phase CML were able to tolerate treatment with SPRYCEL[®]. In clinical studies with 24 months minimum follow-up in chronic phase CML, 10 of the 215 imatinib-intolerant patients had the same Grade 3 or 4 non-haematological toxicity with SPRYCEL[®] as they did with prior imatinib; 8 of the 10 patients were managed with dose reduction and were able to continue SPRYCEL[®] treatment.

Adverse reactions reported in $\geq 10\%$ of patients, and other adverse reactions of interest, in a Phase III trial of newly diagnosed chronic phase CML at a median follow-up of approximately 60 months are presented in Table 10. In this study, drug-related pleural effusion was reported in 73 patients (28%) receiving SPRYCEL[®]. The median time to onset for Grade 1 or 2 pleural effusion events was 114 weeks (range 4-299 weeks). Fewer than 3% of pleural effusion events were Grade 3 or 4. The cumulative incidence of drug-related pleural effusion (all grades) in dasatinib-treated subjects increased over time; the majority are low grade. With appropriate medical care, 58 patients (80% of those with pleural effusion) were able to continue on SPRYCEL[®] (see PRECAUTIONS and DOSAGE AND ADMINISTRATION).

The most frequently reported adverse reactions in SPRYCEL[®]-treated patients with resistance or intolerance to prior imatinib therapy were fluid retention (including pleural effusion), diarrhoea, nausea, headache, skin rash, dyspnoea, haemorrhage, fatigue, musculoskeletal pain, infection, vomiting, cough, abdominal pain and pyrexia. In the Phase III study in patients with resistance or intolerance to prior imatinib therapy, drug-related febrile neutropenia was reported in 2.1% of SPRYCEL[®]-treated patients.

Based on 2 year pooled data, the use of SPRYCEL[®] is associated with fluid retention with Grade 3 and 4 cases in 11% of patients with resistance or intolerance to prior imatinib therapy. Grade 3 or 4 pleural and pericardial effusion were reported in 7% and 2% of patients. Severe congestive heart failure/cardiac dysfunction was reported in 2% of patients. Grade 3 or 4 ascites and generalised oedema were each reported in $< 1\%$. One percent of patients experienced Grade 3 or 4 pulmonary oedema. Fluid retention reactions were typically managed by supportive care measures that include diuretics or short courses of steroids (See PRECAUTIONS).

Bleeding drug-related events, ranging from petechiae and epistaxis to Grade 3 or 4 gastrointestinal haemorrhage and CNS bleeding, were reported in patients taking SPRYCEL[®]. In the Phase III study in patients with newly diagnosed chronic phase CML, 2 patients (1%) receiving SPRYCEL[®] compared to 3 patients (1%) receiving imatinib had Grade 3 or 4 haemorrhage. Based on 2 year pooled data for clinical studies in patients with resistance or intolerance to prior imatinib therapy, severe CNS haemorrhage occurred in $< 1\%$ of patients. Eight (8) cases were fatal and 6 of them were associated with CTC Grade 4 thrombocytopenia. Grade 3 or 4 gastrointestinal haemorrhage occurred in 4% of patients with resistance or intolerance to prior imatinib therapy and generally required treatment interruption and transfusions. Other Grade 3 or 4 haemorrhage occurred in 2% of patients with resistance or intolerance to prior imatinib therapy. Most bleeding related events in these patients were typically associated with Grade 3 or 4 thrombocytopenia. Additionally, *in vitro* and *in vivo* platelet assays suggest that SPRYCEL[®] treatment reversibly affects platelet activation.

Treatment with SPRYCEL[®] is associated with anaemia, neutropenia and thrombocytopenia. Their occurrence is more frequent in patients with advanced phase CML or Ph+ ALL than in chronic phase CML.

QT Prolongation: in the Phase III study in patients with newly diagnosed chronic phase CML, one patient (< 1%) of the SPRYCEL[®]-treated patients, and one patient (< 1%) of the imatinib-treated patients had a QTcF > 500 msec (see PRECAUTIONS).

Patients with risk factors or a history of cardiac disease should be monitored carefully for signs or symptoms consistent with cardiac dysfunction and should be evaluated and treated appropriately (see PRECAUTIONS).

In clinical trials with patients with resistance or intolerance to prior imatinib therapy, it was recommended that treatment with imatinib be discontinued at least 7 days before starting treatment with SPRYCEL[®].

The comparative frequency of adverse reactions (excluding laboratory abnormalities) that were reported in at least 10% of the patients with newly diagnosed chronic phase CML are presented in Table 9.

Table 9: Adverse Reactions Reported in ≥ 10% of Patients in a Phase III Study (Newly Diagnosed Chronic Phase CML, 60 month minimum follow-up)

Preferred Term	All Grades		Grade 3/4	
	SPRYCEL [®] n= 258	imatinib n= 258	SPRYCEL [®] n= 258	imatinib n= 258
	Percent (%) of Patients			
Fluid Retention^e	39	45	5	1
Superficial localised oedema	14	38	0	< 1
Pleural effusion	28	1	3	0
Generalised oedema	4	7	0	0
Pericardial effusion	4	1	1	0
Congestive heart failure/ cardiac dysfunction ^a	2	1	< 1	< 1
Pulmonary hypertension	5	1	< 1	0
Pulmonary oedema	1	0	0	0
Diarrhoea	22	23	1	1
Nausea	10	25	0	0
Abdominal pain	11	8	0	<1
Vomiting	5	12	0	0
Headache	13	11	0	0
Rash ^b	14	18	0	2
Fatigue	11	12	< 1	0
Musculoskeletal pain	14	17	0	< 1
Myalgia	7	12	0	0
Arthralgia	7	10	0	< 1

Muscle spasm	5	21	0	< 1
Haemorrhage^c	7	7	1	1
Gastrointestinal bleeding	2	1	1	0
Other bleeding ^d	6	6	0	1

^a Includes cardiac failure acute, cardiac failure congestive, cardiomyopathy, diastolic dysfunction, ejection fraction decreased and left ventricular dysfunction.

^b Includes erythema, erythema multiforme, rash, rash generalised, rash macular, rash papular, rash pustular, skin exfoliation and rash vesicular.

^c Important adverse reaction of special interest with < 10% frequency.

^d Includes conjunctival haemorrhage, ear haemorrhage, ecchymosis, epistaxis, eye haemorrhage, gingival bleeding, haematoma, haematuria, haemoptysis, intra-abdominal haematoma, petechiae, scleral haemorrhage, uterine haemorrhage and vaginal haemorrhage.

^e Miscellaneous adverse reactions such as pleural effusion, ascites, pulmonary oedema and pericardial effusion with or without superficial oedema may be collectively described as “fluid retention”

A comparison of cumulative rates of selected adverse reactions in the Phase III study of newly diagnosed patients with chronic phase CML with minimum follow-up of one and five years are shown in Table 10.

Table 10: Selected Adverse Drug Reactions Reported in a Phase III Study (Newly Diagnosed Chronic Phase CML (n=258))

Preferred Term	Minimum of 1 Year Follow Up		Minimum of 5 Years Follow Up	
	All Grades	Grade 3/4	All Grades	Grade 3/4
	Percent (%) of Patients			
Fluid Retention^f	19	1	39	5
Pleural effusion	8	0	28	3
Superficial localised oedema	9	0	14	0
Face oedema	6	0	10	0
Pulmonary hypertension	1	0	5	<1
Generalised oedema	2	0	4	0
Pericardial effusion	1	<1	4	1
Congestive heart failure/ cardiac dysfunction ^a	2	<1	2	1
Pulmonary oedema	<1	0	1	0
Diarrhoea	17	<1	22	1
Musculoskeletal pain	11	0	14	0
Rash ^b	11	0	14	0
Headache	12	0	14	0
Fatigue	8	<1	11	<1
Nausea	8	0	10	0
Myalgia	6	0	7	0
Arthralgia	5	0	7	0
Haemorrhage^c	5	<1	8	1
Gastrointestinal bleeding	1	<1	2	1
Other bleeding ^d	4	0	6	0
Vomiting	5	0	5	0
Muscle spasm ^e	4	0	5	0

- ^a Includes cardiac failure acute, cardiac failure congestive, cardiomyopathy, diastolic dysfunction, ejection fraction decreased and left ventricular dysfunction.
- ^b Includes erythema, erythema multiforme, rash, rash generalised, rash macular, rash papular, rash pustular, skin exfoliation and rash vesicular.
- ^c Adverse reaction of special interest with < 10% frequency.
- ^d Includes conjunctival haemorrhage, ear haemorrhage, ecchymosis, epistaxis, eye haemorrhage, gingival bleeding, haematoma, haematuria, haemoptysis, intra-abdominal haematoma, petechiae, scleral haemorrhage, uterine haemorrhage and vaginal haemorrhage.
- ^e In the 60 month analysis the term “muscle inflammation” was re-mapped to “muscle spasm”
- ^f Miscellaneous adverse reactions such as pleural effusion, ascites, pulmonary oedema and pericardial effusion with or without superficial oedema may be collectively described as “fluid retention”

In the Phase III dose-optimisation study in patients with chronic phase CML resistant or intolerant to imatinib, the overall median duration of therapy was approximately 30 months (range <1 to 93 months), with a median duration in the 100 mg once daily group of 37 months (range 1 to 91 months). The study evaluated once daily and twice daily dosage regimens (100 mg and 140 mg once daily, and 50 mg and 70 mg twice daily). Following Year 2 analysis many patients switched to once daily dosing regimens during the subsequent extension of the study. Cumulative rates of selected adverse reactions that were reported in the 100 mg once daily recommended starting dose (n=165) are shown in Table 11.

Table 11: Adverse Drug Reactions reported in Phase III Dose-Optimisation Study: Chronic Phase CML (Imatinib Intolerant or Resistant Chronic Phase CML)^a (n=165)

	Minimum of 2 Years Follow Up		Minimum of 5 Years Follow Up		Minimum of 7 Years Follow Up	
	All Grades	Grade 3/4	All Grades	Grade 3/4	All Grades	Grade 3/4
Preferred Term	Percent (%) of Patients					
Diarrhoea	21	2	28	2	28	2
Fluid Retention ^b	34	4	42	6	48	7
Superficial oedema	18	0	21	0	22	0
Pleural effusion	18	2	24	4	28	5
Generalised oedema	3	0	4	0	4	0
Pericardial effusion	2	1	2	1	3	1
Pulmonary hypertension	0	0	0	0	2	1
Haemorrhage	11	1	11	1	12	1
Gastrointestinal bleeding	2	1	2	1	2	1

^a Phase III dose optimisation study results reported in recommended starting dose of 100 mg once daily (n=165) population.

^b Miscellaneous adverse reactions such as pleural effusion, ascites, pulmonary oedema and pericardial effusion with or without superficial oedema may be collectively described as “fluid retention”

In the Phase III dose-optimisation study in patients with advanced phase CML and Ph+ ALL, the median duration of treatment was 14 months (range <1-36 months) for accelerated phase CML; 3 months (range <1-32 months) for myeloid blast CML; 4 months (<1 – 22 months) for lymphoid blast CML; and 3 months (<1 – 29 months) for Ph+ALL). Selected adverse drug reactions that were reported at the recommended starting dose of 140 mg once daily are shown in Table 12. A 70 mg twice daily regimen was also studied. At Year 2 analysis, the 70 mg twice daily regimen showed a comparable efficacy profile to the 140 mg once daily regimen, but a less favourable safety profile; particularly the fluid retention (pleural effusion

and pericardial effusion) was reported less frequently in patients treated with SPRYCEL® 140 mg once daily than in those treated with 70 mg twice daily.

Table 12: Selected Adverse Drug Reactions Reported in a Phase III Dose-Optimisation Study: Advanced Phase CML and Ph+ ALL

	140 mg once daily ^a n = 304	
	All Grades	Grade 3/4
Preferred Term	Percent (%) of Patients	
Diarrhoea	28	3
Fluid Retention^c	33	7
Superficial oedema	15	<1
Pleural Effusion	20	6
Generalised oedema	2	0
Congestive heart failure/ cardiac dysfunction ^b	1	0
Pericardial effusion	2	1
Pulmonary oedema	1	1
Haemorrhage	23	8
Gastrointestinal bleeding	8	6

^a Phase III dose optimisation study results reported at the recommended starting dose of 140 mg once daily (n=304) population at 2 year final study follow up.

^b Includes ventricular dysfunction, cardiac failure, cardiac failure congestive, cardiomyopathy, congestive cardiomyopathy, diastolic dysfunction, ejection fraction decreased, and ventricular failure.

^c Miscellaneous adverse reactions such as pleural effusion, ascites, pulmonary oedema and pericardial effusion with or without superficial oedema may be collectively described as “fluid retention”

The following adverse reactions, excluding laboratory abnormalities, were reported in patients in SPRYCEL® clinical trials. These reactions are presented by system organ class and by frequency. Frequencies are defined as: *very common* ($\geq 1/10$); *common* ($\geq 1/100$ to $< 1/10$); *uncommon* ($\geq 1/1,000$ to $< 1/100$); *rare* ($\geq 1/10,000$ to $< 1/1,000$). Within each frequency grouping, undesirable effects are presented in order of decreasing seriousness.

Investigations

Common: weight decreased, weight increased

Uncommon: blood creatine phosphokinase increased, Gamma-glutamyl transferase increased

Cardiac disorders

Common: congestive heart failure/cardiac dysfunction^a, pericardial effusion, arrhythmia (including tachycardia), palpitations

Uncommon: myocardial infarction (including fatal outcomes), electrocardiogram QT prolonged, pericarditis, ventricular arrhythmia (including ventricular tachycardia), angina pectoris, cardiomegaly, electrocardiogram T wave abnormal, troponin increased

Rare: cor pulmonale, myocarditis, acute coronary syndrome, cardiac arrest, electrocardiogram PR prolongation, coronary artery disease, pleuropericarditis

Blood and lymphatic system disorders

Very common: myelosuppression (including anaemia, neutropenia, thrombocytopenia)

Common: febrile neutropenia

Uncommon: lymphadenopathy, lymphopenia

Rare: aplasia pure red cell

Nervous system disorders

Very common: headache

Common: neuropathy (including peripheral neuropathy), dizziness, dysgeusia, somnolence

Uncommon: CNS bleeding^b, syncope, tremor, amnesia, balance disorder

Rare: cerebrovascular accident, transient ischemic attack, convulsion, optic neuritis, VIIIth nerve paralysis, dementia, ataxia

Eye disorders

Common: visual disorder (including visual disturbance, vision blurred, and visual acuity reduced), dry eye

Uncommon: conjunctivitis, visual impairment, photophobia, lacrimation increased

Ear and labyrinth disorders

Common: tinnitus

Uncommon: hearing loss, vertigo

Respiratory, thoracic and mediastinal disorders

Very common: pleural effusion, dyspnoea

Common: pulmonary oedema, pulmonary hypertension, lung infiltration, pneumonitis, cough

Uncommon: bronchospasm, asthma, dysphonia, pulmonary arterial hypertension

Rare: acute respiratory distress syndrome, pulmonary embolism

Gastrointestinal disorders

Very common: diarrhoea, vomiting, nausea, abdominal pain

Common: gastrointestinal bleeding (including fatal), colitis (including neutropenic colitis), gastritis, mucosal inflammation (including mucositis/stomatitis), dyspepsia, abdominal distension, constipation, oral soft tissue disorder

Uncommon: pancreatitis, upper gastrointestinal ulcer, oesophagitis, ascites, anal fissure, dysphagia, gastro-oesophageal reflux disease

Rare: protein-losing gastroenteropathy, ileus, pancreatitis acute, anal fistula

Renal and urinary disorders

Uncommon: renal failure, urinary frequency, proteinuria

Rare: renal impairment

Skin and subcutaneous tissue disorders

Very common: skin rash^c

Common: alopecia, dermatitis (including eczema), pruritus, acne, dry skin, urticaria, hyperhidrosis

Uncommon: neutrophilic dermatosis, photosensitivity, pigmentation disorder, panniculitis, skin ulcer, bullous conditions, nail disorder, palmar-plantar erythrodysesthesia syndrome, hair disorder

Rare: leukocytoclastic vasculitis, skin fibrosis

Musculoskeletal and connective tissue disorders

Very common: musculoskeletal pain

Common: arthralgia, myalgia, muscular weakness, musculoskeletal stiffness, muscle spasm

Uncommon: rhabdomyolysis, tendonitis, muscle inflammation, osteonecrosis, arthritis

Metabolism and nutrition disorders

Common: appetite disturbances, hyperuricaemia

Uncommon: dehydration, hypoalbuminaemia, hypercholesterolemia, tumour lysis syndrome

Rare: diabetes mellitus

Infections and infestations

Very common: infection (including bacterial, viral, fungal, non-specified)

Common: pneumonia (including bacterial, viral, and fungal), upper respiratory tract infection/inflammation, herpes virus infection, enterocolitis infection, sepsis (including uncommon reports of fatal outcome)

Injury, poisoning, and procedural complications

Common: contusion

Vascular disorders

Very common: haemorrhage^d

Common: hypertension, flushing

Uncommon: hypotension, thrombophlebitis, thrombosis

Rare: deep vein thrombosis, embolism, livedo reticularis

General disorders and administration site conditions

Very common: peripheral oedema^e fatigue, face oedema^f, pyrexia

Common: asthenia, pain, chest pain, generalised oedema^g, chills

Uncommon: malaise, other superficial oedema^h

Rare: gait disturbance

Immune System Disorders

Uncommon: hypersensitivity (including erythema nodosum)

Endocrine Disorders

Uncommon: hypothyroidism

Rare: hyperthyroidism, thyroiditis

Hepatobiliary disorders

Uncommon: hepatitis, cholecystitis, cholestasis

Reproductive system and breast disorders

Uncommon: gynecomastia, menstrual disorder

Pregnancy, puerperium and perinatal conditions

Rare: abortion

Psychiatric disorders

Common: depression, insomnia

Uncommon: anxiety, confusional state, affect lability, libido decreased

a. Includes ventricular dysfunction, cardiac failure, cardiac failure congestive, cardiomyopathy, congestive cardiomyopathy, diastolic dysfunction, ejection fraction decreased and ventricular failure.

b. Includes cerebral haematoma, cerebral haemorrhage, extradural haematoma, haemorrhage intracranial, hemorrhagic stroke, subarachnoid haemorrhage, subdural haematoma, and subdural haemorrhage.

c. Includes drug eruption, erythema, erythema multiforme, erythrosis, exfoliative rash, generalised erythema, genital rash, heat rash, milia, rash, rash erythematous, rash follicular, rash generalised, rash macular, rash maculo-papular, rash papular, rash pruritic, rash pustular, rash vesicular, skin exfoliation, skin irritation and urticaria vesiculosa.

d. Excludes gastrointestinal bleeding and CNS bleeding; these ADRs are reported under the gastrointestinal disorders system organ class and the nervous system disorders system organ class, respectively.

e. Includes gravitational oedema, localised oedema, oedema peripheral

f. includes conjunctival oedema, eye oedema, eye swelling, eyelid oedema, face oedema, lip oedema, macular oedema, oedema mouth, orbital oedema, periorbital oedema, swelling face

g. includes fluid overload, fluid retention, gastrointestinal oedema, generalised oedema, oedema, oedema due to cardiac disease, perinephric effusion, post procedural oedema, visceral oedema

h. includes genital swelling, incision site oedema, oedema genital, penile oedema, penile swelling, scrotal oedema, skin swelling, testicular swelling, vulvovaginal swelling

Postmarketing Experience

The following additional adverse events have been identified during post approval use of SPRYCEL. Because these reactions are reported voluntarily from a population of uncertain size, it is not always possible to reliably estimate their frequency or establish a causal relationship to drug exposure.

Infections and infestations:	hepatitis B reactivation
Cardiac disorders:	atrial fibrillation/atrial flutter ^a
Respiratory, thoracic and mediastinal disorders:	interstitial lung disease, pulmonary arterial hypertension
Skin and subcutaneous tissue disorders:	Stevens-Johnson syndrome ^b
Renal and urinary disorders:	nephrotic syndrome

a. Typically reported in elderly patients or in patients with confounding factors including significant underlying or concurrent cardiac or cardiovascular disorders, or other significant comorbidities (eg, severe infection/sepsis, electrolyte abnormalities).

b. In the post-marketing setting, individual cases of Stevens-Johnson syndrome have been reported. It could not be determined whether these mucocutaneous adverse reactions were directly related to SPRYCEL or to concomitant medications.

DOSAGE AND ADMINISTRATION

The recommended starting dosage of SPRYCEL[®] (dasatinib) for chronic phase CML is 100 mg administered orally once daily (QD). The recommended starting dosage of SPRYCEL[®] for accelerated phase CML, myeloid or lymphoid blast phase CML, or Ph+ ALL is 140 mg/day administered orally once daily and should be taken consistently either in the morning or the evening.

In clinical studies, treatment with SPRYCEL[®] was continued until disease progression or until no longer tolerated by the patient. The effect of stopping treatment on long-term disease outcome after the achievement of a cytogenetic response (including complete cytogenetic response (CCyR) or major molecular response (MMR and MR4.5) has not been investigated.

To achieve the recommended dose, SPRYCEL[®] is available as 20 mg, 50 mg, 70 mg and 100 mg film-coated tablets. Dose increase or reduction is recommended based on patient response and tolerability.

Dose escalation

In clinical studies in adult CML and Ph+ ALL patients, dose escalation to 140 mg once daily (chronic phase CML) or 180 mg once daily (advanced phase CML and Ph+ ALL) was

allowed in patients who did not achieve a haematologic or cytogenetic response at the recommended starting dosage.

Dose adjustment for adverse reactions

Myelosuppression

In clinical studies, myelosuppression was managed by dose interruption, dose reduction, or discontinuation of study therapy. Platelet transfusion and red cell transfusion were used as appropriate. Haematopoietic growth factor has been used in patients with resistant myelosuppression. Guidelines for dose modifications are summarized in Table 13.

Table 13: Dose Adjustments for Neutropenia and Thrombocytopenia		
Chronic Phase CML (starting dose 100 mg once daily)	ANC* <0.5 x 10 ⁹ /L and/or Platelets <50 x 10 ⁹ /L	<ol style="list-style-type: none"> 1. Stop SPRYCEL[®] until ANC ≥1.0 x10⁹/L and platelets ≥50 x 10⁹/L 2. Resume treatment with SPRYCEL[®] at the original starting dose 3. If platelets <25 x10⁹/L and/or recurrence of ANC <0.5 x 10⁹/L for >7 days, repeat step 1 and resume SPRYCEL[®] at a reduced dose of 80 mg once daily for second episode. For third episode further reduce dose to 50 mg once daily (for newly diagnosed patients) or discontinue (for patients resistant or intolerant to prior therapy including imatinib).
Accelerated Phase CML, Blast Phase CML and Ph+ ALL (starting dose 140 mg once daily)	ANC* <0.5 x 10 ⁹ /L and/or Platelets <10 x 10 ⁹ /L	<ol style="list-style-type: none"> 1. Check if cytopenia is related to leukaemia (marrow aspirate or biopsy) 2. If cytopenia is unrelated to leukaemia, stop SPRYCEL[®] until ANC ≥1.0 x 10⁹/L and platelets ≥20 x 10⁹/L and resume at the original starting dose 3. If recurrence of cytopenia, repeat step 1 and resume SPRYCEL[®] at a reduced dose of 100 mg once daily (second episode) or 80 mg once daily (third episode) 4. If cytopenia is related to leukaemia, consider dose escalation to 180 mg once daily
*ANC: absolute neutrophil count		

Non-haematological adverse reactions

If a severe non-haematological adverse reaction develops with SPRYCEL[®] use, treatment must be withheld until the event has resolved or improved. Thereafter, treatment can be resumed as appropriate at a reduced dose depending on the severity and recurrence of the event.

Paediatric population: The safety and efficacy of SPRYCEL[®] in children and adolescents below 18 years of age have not yet been established. No data are available (see PRECAUTIONS).

Elderly population: No clinically relevant age-related pharmacokinetic differences have been observed in these patients. No specific dose recommendation is necessary in the elderly (see PRECAUTIONS).

Hepatic impairment: Patients with mild, moderate or severe hepatic impairment may receive the recommended starting dose. However, caution is recommended when SPRYCEL[®] is administered to patients with hepatic impairment. (see PRECAUTIONS).

Renal impairment: No clinical trials were conducted with SPRYCEL[®] in patients with decreased renal function (the study in patients with newly diagnosed chronic phase CML excluded patients with serum creatinine > 3 times the upper limit of the normal range, and studies in patients with chronic phase CML with resistance or intolerance to prior imatinib therapy excluded patients with serum creatinine concentration >1.5 times the upper limit of the normal range). Since the renal clearance of dasatinib and its metabolites is <4%, a decrease in total body clearance is not expected in patients with renal insufficiency (see PRECAUTIONS).

Method of Administration: To be administered orally. Tablets must not be crushed or cut in order to minimize risk of dermal exposure, they must be swallowed whole. SPRYCEL[®] can be taken with or without a meal and should be taken consistently either in the morning or the evening.

OVERDOSAGE

Experience with overdose of SPRYCEL[®] in clinical studies is limited to isolated cases. The highest overdose of 280 mg per day for one week was reported in two patients and both developed a significant decrease in platelet counts. Since SPRYCEL[®] is associated with severe myelosuppression, patients who ingest more than the recommended dosage should be closely monitored for myelosuppression and given appropriate supportive treatment.

For information on the management of overdose, contact the Poison Information Centre on 131126 (Australia).

PRESENTATION AND STORAGE CONDITIONS

SPRYCEL[®] (dasatinib) tablets are available as film-coated, white to off-white, biconvex, round tablets with “BMS” debossed on one side and “527” (20 mg), or “524” (70 mg) on the other side.

The 50 mg tablets are oval shaped and debossed “BMS” on one side and “528” on the other side.

The 100 mg tablets are oval shaped and debossed “BMS 100” on one side and “852” on the other side.

20 mg, 50 mg and 70 mg Tablets are available in bottles or blisters of 60 tablets. 100 mg Tablets are available in bottles or blisters of 30 tablets.

Not all pack sizes may be marketed.

Storage Conditions

SPRYCEL[®] (dasatinib) tablets should be stored below 30 °C.

Handling and Disposal

Procedures for proper handling and disposal of anticancer drugs should be considered. Several guidelines on this subject have been published. There is no general agreement that all of the procedures recommended in the guidelines are necessary or appropriate.

SPRYCEL[®] (dasatinib) tablets consist of a core tablet (containing the active drug substance), surrounded by a film coating to prevent exposure of pharmacy and clinical personnel to the active drug substance. However, if tablets are crushed or broken, pharmacy and clinical personnel should wear disposable chemotherapy gloves. Personnel who are pregnant should avoid exposure to crushed and/or broken tablets.

NAME AND ADDRESS OF THE SPONSOR

Bristol-Myers Squibb Australia Pty Ltd
4 Nexus Court, Mulgrave,
Victoria 3170, Australia.

POISON SCHEDULE OF THE MEDICINE

Schedule 4

DATE OF FIRST INCLUSION IN THE AUSTRALIAN REGISTER OF THERAPEUTIC GOODS (the ARTG)

20 mg, 50 mg, 70 mg: 15 January 2007

100 mg: 16 February 2010

DATE OF MOST RECENT AMENDMENT

28 March 2017